

THE METROPOLITAN MUSEUM OF ART



3 0620 00365837 3

119.8

P01
1936⁴

THE METROPOLITAN MUSEUM
OF ART
THE LIBRARY



PRESENTED BY

American Art Association

83866

SALE NUMBER 4268

FREE PUBLIC EXHIBITION

*From Saturday, October 10, to Time of Sale
Weekdays 9 to 6 • Closed Sunday*

• • •

PUBLIC SALE

*Friday and Saturday
October 16 and 17, at 2:15 p.m.*

• • •


EXHIBITION & SALE AT THE
AMERICAN ART ASSOCIATION
ANDERSON GALLERIES • INC

30 East 57th Street
New York City

• • •

Sales Conducted by

HIRAM H. PARKE • OTTO BERNET • H. E. RUSSELL, JR.



Digitized by the Internet Archive
in 2014 with funding from
The Metropolitan Museum of Art

FRENCH & ENGLISH FURNITURE

*Examples of the Louis XV, Louis XVI, and Directoire
William and Mary, Queen Anne, and Georgian Periods
Together with Italian and American Examples*

ORIENTAL RUGS & NEEDLEPOINT CARPETS
TAPESTRIES & ENGLISH PORCELAINS & POTTERY

Property of the Estate of the Late
HELEN DAVIES LANPHER

Property of the
WITTERIED HOLDING CORPORATION
MRS FRANKLIN FIELD
EMANUEL VOSS

AND OF OTHER OWNERS

*Together with Objects of Oriental Art
Including Property of the Estate of the Late*
COMMODORE W. C. EATON, U. S. N.



Public Sale

October 16 and 17 at 2:15 p. m.

AMERICAN ART ASSOCIATION
ANDERSON GALLERIES · INC
1936

PRICED CATALOGUES

A priced copy of this catalogue may be
obtained for one dollar for each
session of the sale

CONDITIONS OF SALE

The property listed in this catalogue will be offered and sold subject to the following terms and conditions:

1. The word "Company", wherever used in these Conditions of Sale, means the American Art Association-Anderson Galleries, Inc.

2. The Company has exercised reasonable care to catalogue and describe correctly the property to be sold, but it does not warrant the correctness of description, genuineness, authenticity or condition of said property.

3. Unless otherwise announced by the auctioneer at the time of sale, all bids are to be for a single article even though more than one article is included under a numbered item in the catalogue. If, however, the articles under any one numbered item are designated as a "Lot" then bids are to be for the lot irrespective of the number of articles described in such item.

4. The highest bidder accepted by the auctioneer shall be the buyer. In the event of any dispute between bidders, the auctioneer may, in his discretion, determine who is the successful bidder, and his decision shall be final; or the auctioneer may reoffer and resell the article in dispute.

5. Any bid which is not commensurate with the value of the article offered, or which is merely a nominal or fractional advance over the previous bid, may be rejected by the auctioneer, in his discretion, if in his judgment such bid would be likely to affect the sale injuriously.

6. The name and address of the buyer of each article, or lot, shall be given to the Company immediately following the sale thereof, and payment of the whole purchase price, or such part thereof as the Company may require, shall be immediately made by the purchaser thereof. If the foregoing condition, or any other applicable condition herein, is not complied with, the sale may, at the option of the Company, be cancelled, and the article, or lot, reoffered for sale.

7. Unless the sale is advertised and announced as an unrestricted sale, or a sale without reserve, consignors reserve the right to bid.

8. Except as herein otherwise provided, title will pass to the highest bidder upon the fall of the auctioneer's hammer, and thereafter the property is at the purchaser's sole risk and responsibility.

9. Articles sold and not paid for in full and not taken by noon of the day following the sale may be turned over by the Company to a carrier to be delivered to a store-

house for the account and risk of the purchaser, and at his cost. If the purchase price has not been so paid in full, the Company may either cancel the sale, and any partial payment already made shall thereupon be forfeited as liquidated damages, or it may resell the same, without notice to the buyer and for his account and risk, and hold him responsible for any deficiency.

10. If for any cause whatsoever any article sold cannot be delivered, or cannot be delivered in as good condition as the same may have been at the time of sale, the sale will be cancelled, and any amount that may have been paid on account of the sale will be returned to the purchaser.

11. In addition to the purchase price, the buyer will be required to pay the New York City sales tax, unless the buyer is exempt from the payment thereof.

12. The Company, subject to these Conditions of Sale and to such terms and conditions as it may prescribe, but without charge for its services, will undertake to make bids for responsible parties approved by it. Requests for such bidding must be given with such clearness as to leave no room for misunderstanding as to the amount to be bid and must state the catalogue number of the item and the name or title of the article to be bid on. If bids are to be made on several articles listed as one item in the catalogue, the request should state the amount to be bid on each article, unless the item contains the notation "Lot", in which case the request should state the amount to be bid "For the Lot". The Company reserves the right to decline to undertake to make such bids.

13. The Company will facilitate the employment of carriers and packers by purchasers but will not be responsible for the acts of such carriers or packers in any respect whatsoever.

14. These Conditions of Sale cannot be altered except in writing by the Company or by public announcement by the auctioneer at the time of sale.

SALES CONDUCTED BY HIRAM H. PARKE, OTTO BERNET, AND H. E. RUSSELL JR.

AMERICAN ART ASSOCIATION ANDERSON GALLERIES • INC

30 EAST 57TH STREET • NEW YORK

Telephone PLAZA 3-1269

Cable ARTGAL or ANDAUTION

HIRAM H. PARKE • *President*

OTTO BERNET • *Vice-President*

ARTHUR SWANN • *2nd Vice-President*

BIOGRAPHICAL MEMOIR

COMMODORE W. C. EATON, U.S.N., retired in 1909 after a lifetime of naval service, during which he cruised all over the world. From 1890 to 1893 he was with the Asiatic Fleet, including a tour of duty with the Yang-Tse Patrol, which took him far into the interior of China. It was during this time that he made his Oriental collection, the pieces having actually been acquired by him in China or Japan, and having been in his possession since that time.

There have been added to the collection a few other objects acquired elsewhere by Commodore Eaton during his Naval Service and also several pieces brought from Europe by his brother-in-law, the late J. Dennison Blish, of New York.

ORDER OF SALE

FIRST SESSION

FRIDAY AFTERNOON, OCTOBER SIXTEENTH

Bibelots and Decorative Objects	1- 12
Glass	13- 18
Copeland, Worcester, and Other Table Porcelains	19- 27
Silver and Silver-plated Ware	28- 40
Chinese Porcelains	41- 57
Chinese Semi-precious Mineral Carvings, Japanese Bronzes and Armor	58- 81
Paintings	82- 87
English and American Furniture and Decorations	88-142
Oriental Rugs	143-159
French and Italian Furniture and Decorations	160-240

SECOND AND LAST SESSION

SATURDAY AFTERNOON, OCTOBER SEVENTEENTH

Staffordshire, Leeds, Bristol, and Sunderland Figures and Lustre Ware	241-284
English XVIII Century Furniture and Decorations	285-334
Oriental and Needlepoint Rugs	335-359
Tapestries	360-366
French XVIII Century Furniture and Decorations	367-457

FIRST SESSION

Friday, October 16, 1936, at 2:15 p. m.

CATALOGUE NUMBERS 1 TO 240 INCLUSIVE

BIBELOTS AND DECORATIVE OBJECTS

1. TWO IVORY PORTRAIT MINIATURES *Circa 1815*
Portrait of a man with curly hair wearing dark blue coat and white stock; and of a nobleman wearing the Légion d'Honneur, signed C. J. d'Avel, Rouen, 1815.
2. SIX BIBELOTS
Pair Chinese carved porcelain snuff bottles of the Ch'ien-lung period, imperfect; a Peking painted enamel oval *bonbonnière*; a miniature on ivory of a lady in a costume of the Regency; two Battersea enamel plaquettes, one painted *en grisaille* with Venus, the other with two nymphs garlanding a column. [Lot.] (*Lanpher*)
3. GOLD CHIMING WATCH *Breguet, Paris, XIX Century*
Gold 'engine-turned' case, the dial embellished with figures who strike bells to indicate the hours. (*Lanpher*) *Diameter, 2 inches*
4. FIVE WAX PORTRAIT BUSTS
Figures of Lord Byron, Dr Johnson, Jeremiah Dixon, John Paul Jones, and Amerigo Vespucci; framed. [Lot.] (*Lanpher*)
5. TWO DECORATIVE SMALL OBJECTS
Chinese carved agate snuff bottle; small engraved miniature portrait of a lady, signed Gaugin. (*Field*) *Heights, 2¾ and 3½ inches*
6. THREE MINIATURES ON IVORY *English, Early XIX Century*
Portrait in profile of a gentleman in black coat and white stock, another of a naval officer in blue coat and white waistcoat, another of a gentleman holding a volume; framed. [Lot.] (*Lanpher*)
Heights, about 4 inches
7. NINE SMALL DECORATIVE PAINTINGS ON GLASS *Circa 1830-40*
Seven figures of women, a half-length seated figure of Washington, and portrait of Leopold I of Belgium, in gay colors; framed. [Lot.] (*Lanpher*)

8. TWO BLACK AND GOLD LACQUER BOXES

Circa 1850

Oriental lacquer work box with carved ivory fittings; English lacquer work box fitted for cards, on bronze feet. [Lot.] (*Lanpher*)

Lengths, 10 and 11 inches

9. THREE DECORATIVE OBJECTS

Pair of striated glass, bronze, and marble flower holders; and an Empire painted tole square vase. [Lot.] (*Lanpher*)

Heights, 9 and 10 inches

10. THREE DECORATIVE OBJECTS

A small Chinese robin's-egg blue porcelain vase lamp; an old English inlaid sycamore case of perfume bottles; a bronze and parchment two-light table lamp. [Lot.] (*Field*)

Heights, 5 and 12 inches

11. PAIR OF DUTCH GLASS DECANTERS AND A PAINTED WOOD COFFRET

Shaped decanters painted with animals, ships, and windmills. The coffret painted with medieval figures and flowers. [Lot.] (*Lanpher*)

12. FIVE DECORATIVE FRAMED PRINTS

Various subjects, with small folios; ebonized frames. [Lot.] (*Field*)

GLASS

13. ROSE PINK GLASS TABLE SERVICE

Comprising nine goblets, fourteen champagnes, and fifteen sherries; with five cocktails and five fingerbowls of differing pattern. Some chipped. [Lot.]

14. TWELVE ENGRAVED CRYSTAL GLASS FRUIT PLATES

Deep plate engraved with swags and small flowers. (*Field*)

Diameter, 9 inches

14A. PRESSED GLASS FRUIT-COCKTAIL SERVICE

Comprising a pair of compotiers, four small jars, and twelve cups and saucers. Pressed with thumb spots; ruby glass rim bands. [Lot.]

15. DUTCH GLASS LIQUEUR SET IN MAHOGANY CASE

Circa 1830

Set of six square blown glass decanters, four of which retain the gilded shoulder decoration.

Length of case, 12 inches

16. PAIR OLD BOHEMIAN GLASS VASES AND
A PAIR DECALCOMANIA VASES

Green and gold vase hung with glass prisms, painted with flowers; pair of green bulbous vases with decalcomania decoration of figures and flowers. [Lot.] (*Lanpher*)

Heights, 11 and 13 inches

17. SAPPHIRE BLUE GLASS COMPOTTER, VASE AND MAMMOTH GOBLET
Shallow flanged bowl, small paneled vase, and goblet of exceptional size.
[Lot.]

18. LOT OF DECORATIVE GLASS AND CERAMICS
Six amber and green hobnail-pattern glass fingerbowls, two talence por-
ringers and covers, a flower-painted plate. [Lot.] (*Field*)

COPELAND, WORCESTER, AND OTHER TABLE PORCELAINS

19. EIGHT COPELAND DECORATED CHINA PLACE PLATES AND
SIX TEACUPS AND SAUCERS
Handsome Copeland china place plate in Hizen pattern and six Black
Knight black and gold cups and saucers. [Lot.] (*Lanpher*)
Diameter of plates, 10 inches

20. TWELVE ROYAL WORCESTER PORCELAIN SOUP PLATES
Decorated with conventionalized Imari pattern in red, green, blue, and
gold. (*Lanpher*) *Diameter, 10¼ inches*

21. NINE DECORATED PORCELAIN ARMORIAL PLATES
Decorated in enamel colors with swags of flowers and leaves and armorial
escutcheons in Oriental Lowestoft style; one repaired. (*Lanpher*)
Diameter, 9½ inches

22. EIGHTEEN CAULDON DECORATED PORCELAIN FRUIT PLATES
Scalloped plate of white porcelain, finely painted with a lambrequin pat-
tern of tiny blue forget-me-nots joined by arches of pink roses.
Diameter, 8¾ inches

- 22A. EIGHT BRUNSWICK DECORATED PORCELAIN SERVICE PLATES
Cream ware finely painted with a nosegay of flowers, with ruby borders
adorned with gilded lambrequins. *Diameter, 11¼ inches*

23. PAIR CROWN DERBY PORCELAIN PLATTERS *Circa 1800*
Oval platter richly decorated with old Imari floral design in red, blue,
and gold; Duesbury mark; one age-cracked. (*Field*)
Length, 15 inches

24. TWELVE GILDED PORCELAIN PLACE PLATES
Allover incised pattern in the Persian taste. (*Field*)
Diameter, 10½ inches

25. ROYAL WORCESTER PORCELAIN PART SERVICE

Seventeen plates, two platters, seven saucers, four cups in pink, yellow, and green floral pattern. [Lot.] (*Lanpher*)

26. TWENTY-TWO ENGLISH AND FRENCH PORCELAIN PLATES AND TWO PLATTERS

Medium dessert plate with white and gold borders. [Lot.] (*Lanpher*)
Diameter of plate, 8½ inches

27. LOT OF TABLE PORCELAIN

Twelve Spode Copeland bouillon cups and saucers; eleven white, blue, and gold berry plates; twelve French small plates painted with fruits. [Lot.] (*Lanpher*)

SILVER AND SILVER-PLATED WARE

28. EIGHT SILVER BIBELOTS

Perfume holders, *étuis*, medallions, and patch boxes varying in design. [Lot.] (*Lanpher*)

29. FIVE SILVER BIBELOTS

Memo pad, Swiss enamel and crystal clock, crystal and silver gilt crucifix, crystal and silver, vase, and a *bonbonnière*. [Lot.] (*Lanpher*)
Heights, 3 to 4 inches

30. NINETEEN STERLING SILVER SERVERS AND SPOONS AND TWELVE NUT DISHES

Servers including three pairs of forks and spoons, ladles, strainers, tongs, a table spoon, and two old salt spoons by W. D. Steward. Thirty-one pieces; some monogrammed. [Lot.]

31. TWO PAIRS SILVER-PLATED CANDLESTICKS

Georgian Style

Pair with circular bases and gadroon borders; smaller pair with oblong base. (*Lanpher*)
Heights, 7½ and 13 inches

32. EARLY AMERICAN SILVER AND CUT GLASS CRUET

William Adams, New York, fl. 1830

Silver circular frame on square base, molded with foliage and containing seven cut glass condiment bottles.
Height, 12½ inches

33. SILVER-PLATED TEA KETTLE AND PAIR COFFEE POTS

Reed and Barton kettle on stand, pair Rogers shaped coffee pots. [Lot.] (*Lanpher*)
Heights, 10 and 15 inches

34. SHEFFIELD PLATE HOT WATER URN

Circa 1825

Borders and handles molded with grapevine. (*Lanpher*)

Height, 13 inches

35. EARLY AMERICAN SILVER TEAPOT

Charles A. Burnett, Georgetown, D. C., circa 1810

Oval teapot with molded foot and cover, curved wood handle and leaved spout; engraved with a draped husk wreath and dated 1810. Maker's name stamped on foot.

Height, 9 inches

36. PAIR SHEFFIELD PLATE FRUIT BASKETS AND PAIR COASTERS

Circa 1830

Circular basket, the border and handle molded with a grapevine; pair of coasters similar. [Lot.] (*Lanpher*)

Diameter of basket, 12 inches

37. SILVER-PLATED TWO-HANDLED TEA TRAY

Oval with beaded pierced border, foliated handles, and engraved centre. (*Lanpher*)

Length, 29 inches

38. LOT OF SILVER-PLATED ARTICLES

Three oval platters, pair of coasters, pair of sauce boats and an *ajouré* dish stand. [Lot.] (*Lanpher*)

39. LOT OF SHEFFIELD PLATE ARTICLES

Two candle snuffers with trays, three oval dishes with grapevine border, a *repoussé* pitcher, and a six-division toast rack. [Lot.] (*Lanpher*)

40. LOT OF SMALL SILVER AND SILVER-PLATED ARTICLES

Pair figural vases, square teapot, chamber candlestick, chalice, a bonbon compote, and a *repoussé* flower bowl with silver handle. [Lot.] (*Lanpher*)

CHINESE PORCELAINS

41. THREE CHINESE CARVED PORCELAIN SNUFF BOTTLES *Ch'ia Ch'ing*Carved with dragon and phoenix, symbols of the Emperor and Empress, in white, coral red, and *famille rose* porcelain, respectively; have stands. (*Eaton*)42. FIVE SNUFF BOTTLES WITH ROUGE DE FER DECORATION *Yung Ch'ing*Painted in *rouge de fer* with dragons, carp, sages, and deities. (*Eaton*)

43. FIVE DECORATED PORCELAIN SNUFF BOTTLES

*Ch'ien-lung and Tao Kuang*Three with dragon decoration in the *san ts'ai*, one with figures in the *famille verte* enamels, and one painted with seven roosters. (*Eaton*)

44. FOUR CHINESE PORCELAIN CABINET VASES

Yung Chêng and Ch'ien-lung

Millet yellow gallipot, *flambé* gallipot and pyriform vase, and a blue and white cylindrical bottle painted with a gilded dragon. (Eaton)

45. BLUE AND WHITE BOWL AND TWO JARS

Ming and Ch'ing

Ming bowl decorated with figures of children amid scrollings of lotus (chipped); K'ang-hsi 'hawthorn' vase; and a Ch'ien-lung covered jar painted with bats and clouds. Have stands. [Lot.] (Eaton)

Diameter of bowl, 6¾ inches; heights of jars, 5½ and 4½ inches

46. TING YAO GLOBULAR COUPE

Ch'ien-lung

Spherical with metal-rimmed mouth, lightly incised with lotus scrollings and Buddhistic symbols beneath a crackled transparent glaze; modeled with two ogre heads as handles. Has stand. (Eaton)

Diameter, 5 inches

47. TWO BLANC DE CHINE VASES WITH RELIEF DECORATION

Ming

Tall-necked dragon bottle, and ovoid vase molded with a *mei hua* branch and two ogre-mask bosses. (Eaton)

Heights, 5¾ and 6¼ inches

48. THREE FLAMBÉ CABINET VASES

Ch'ien-lung

Two globular tall-necked bottles (neck of one repaired), and a gallipot; invested with streaky *sang de poulet* glazes. (Eaton)

Heights, 4½ to 5 inches

49. MIRROR BLACK VASE

Ch'ien-lung

Ovoid vase with flaring neck and lustrous mirror black glaze; has stand. (Eaton)

Height, 6½ inches

50. BLUE AND WHITE 'HAWTHORN' GINGER JAR

K'ang-hsi

Painted with *mei* flowers on a 'cracked ice' ground, with two quatrefoil reserves of household utensils; has cover and stand. (Eaton)

Height, 7½ inches

51. TWO FLAMBÉ BOTTLE-FORM VASES

Ch'ien-lung

One coated with a streaked *sang de poulet* glaze, the other with a mottled strawberry red glaze; have stands. (Eaton)

Heights, 7¾ and 8 inches

52. CELADON BOTTLE-FORM VASE

Ch'ien-lung

Pyriform vase with ringed neck and lobed bulbous mouth, coated with a monochrome celadon glaze of brilliant texture. (Eaton)

Height, 7¼ inches

53. THREE-COLOR STATUETTE OF KUAN YIN

Ming

Seated figure of the goddess of Mercy holding a child, her robes glazed turquoise blue, yellow, and aubergine; inscription on back. (Eaton)

Height, 9 inches

53A. FLAMBÉ BOTTLE-FORM VASE

Ch'ien-lung

Globular bottle with tall cylindrical neck; invested with a streaky cherry red glaze.

Height, 15¾ inches

54. PAIR FINE BLUE AND WHITE IMPERIAL DRAGON VASES AND COVERS

Early Yung Chêng

Ovoid vase, with blue underglaze and *rouge de fer* overglaze decoration of an Imperial dragon pursuing the sacred jewel among clouds, above waves; the cover with clouds and bat forms and Shou character. Covers of later date; wood stands. One age-cracked.

Height, 21 inches

55. THREE MONOCHROME PORCELAIN VASES

Ch'ing

Two coated with a closely crackled apple green glaze; and a powder blue pyriform bottle. One repaired; have stands. (Eaton)

Heights, 5 to 6 inches

56. TWELVE PIECES OF CHINESE DECORATED PORCELAIN

Ch'ing

Two plaques, pair of rice bowls, and a baluster vase with dragon decoration, a *famille rose* dish, and six small nasturtium yellow dishes. [Lot.] (Eaton)

57. LOT OF DECORATED JAPANESE PORCELAINS

Set of thirteen Imari dessert plates, a large jar, two covered rice bowls, and a Satsuma potpourri basket. [Lot.] (Eaton)

CHINESE SEMI-PRECIOUS MINERAL CARVINGS
JAPANESE BRONZES AND ARMOR

58. FIVE PEKING GLASS AND AGATE SNUFF BOTTLES

Sapphire blue and white cameo glass, ruby and white glass, rose *soufflé* glass, marbled amber glass, and a pale brown agate bottle. (Eaton)

59. TWELVE JAPANESE TSUBA

Sword guards of various designs, finely chiseled and decorated in gold and *shakudo* with dragons and floral ornament, one beautifully wrought with insects hopping among a profusion of flowering shrubs. Together with three *kashira* chiseled with masks and flowers. [Lot.] (Eaton)

60. EIGHT CHINESE AND JAPANESE BIBELOTS

Bronze statuette of Buddha, two rock crystal spheres, two ivory puzzle balls, cinnabar lacquer *netsuke*, enamel cup, and miniature Satsuma vase. [Lot.] (Eaton)

61. JAPANESE CARVED IVORY CASKET AND CHINESE CARD CASE

Japanese basket-woven box, the cover carved with a Buddhistic scene; case finely undercut with peony branches centring a genre scene. [Lot.]
(Eaton) *Lengths, 6¾ and 4½ inches*

62. CARVED ROSE QUARTZ INKWELL

Coupe undercut with figures of two animals amid entwined peony branches, the hinged cover with a *Fu* lion; has stand. *Height, 3½ inches*

63. CARVED RHINOCEROS HORN COUPE AND THREE
WHITE JADE MEDALLIONS

Coupe entwined with fruiting peach trees and a perched crane, in undercut relief (chipped); small plaquettes of white jade, one pierced with phoenixes amid lotus branches. [Lot.] (Eaton)

64. PAIR CARVED CARNELIAN BIRD GROUPS

Each with two figures of long-tailed *feng huang* tugging at peony stems, in amber red carnelian; have stands. *Height, 5 inches*

65. TWO CARVED FLUORITE INKWELLS

Coupe entwined with a carved branch of peaches, upon which are perched birds; bronze mounts with amethystine fruit finials. *Height, 5 inches*

66. CARVED AMETHYSTINE QUARTZ VASE OF GRAPES

Flattened vase carved in the gray mineral, with undercut carving upon one face of bunches of purple grapes, amid which are rodents; has stand. *Height, 5½ inches*

67. TWO JAPANESE BRONZE STATUETTES OF BUDDHA

XVII-XVIII Century

Seated figure with tightly curled hair, in clinging robes meticulously folded; have stands. (Eaton) *Heights, 6 and 8 inches*

68. CARVED ROSE QUARTZ INKWELL

Coupe entwined with undercut stems of peonies, the hinged cover with bird finial; bronze mount. *Height, 5½ inches*

69. PAIR PRESSED AMBER STATUETTES

Standing figures of female Bodhisattvas, holding *ling chih* sceptre and tablets, respectively; have stands. *Height, 8 inches*

70. CARVED ROSE QUARTZ VASE

In the shape of a fruit carved in high relief with figure of a priestess with fowl, holding a fly whisk, the cover with a roosting bird; has stand. *Height, 6½ inches*

71. SEVEN JAPANESE DECORATED ENAMEL ORNAMENTS

Ovoid dragon vase, three small vases, and a pair of covered jars and a rouge box with brown aventurine ground. [Lot.] (Eaton)

72. PAIR CARVED ROSE QUARTZ COVERED VASES

Ovate bronze-form vase carved with *tao t'ieh* ogres, the cover with *Fu* dog finial; two scrolled handles as shoulders; have stands.

Height, 7 inches

73. CARVED AMETHYSTINE QUARTZ COVERED VASE

Bronze-form vase with undercut carving of a ram beside a rock surmounted by a fruiting tree, the cover with a *shi tzu*; has stand.

Height, 8 inches

[See illustration on page 16]

74. CARVED AMETHYSTINE QUARTZ VASE

Ch'ien-lung

Bronze-form jar and cover, carved in high relief upon one side with stems of huge peaches, a child clambering up to reach two birds perched at the top; has stand.

Height, 6½ inches

[See illustration on page 16]

75. CARVED ROSE QUARTZ GROUP

Sturdy figure of a flower maiden holding a large stem of peonies, and attended by a *fêng huang* bird; has stand.

Height, 7 inches

76. PAIR CARVED FLUORITE BIRD STATUETTES

Figure of a long-tailed bird with raised fore-claw, a branch of peaches in its beak.

Height, 8½ inches

77. THREE JAPANESE BRONZE DRAGON AND BIRD FIGURES

Two horned scaly figures of three-clawed dragons, and an eagle with hinged wings perched upon a tripod stump. [Lot.] (Eaton)

Lengths, 9, 12, and 20 inches

78. PAIR CHINESE SEMI-PRECIOUS MINERAL PLANTS IN

CLOISONNÉ ENAMEL JARDINIÈRES

Flowering peony shrub in carnelian, malachite, agate, and other minerals, with green jade leaves; in round tub of turquoise blue cloisonné enamel.

Height, about 20 inches

79. TWO CHINESE PAINTINGS ON GLASS

Late XVIII Century

Portrait of a young girl in white; and interior with figure of a young woman talking to a poet robed in blue. Framed.

Height, 20 inches; width, 14 inches

80. PANOPLY OF JAPANESE DECORATED BLACK LACQUER ARMOR

Two suits, four helmets, two war masks, and seven shields, including one of woven straw. As exhibited. [Lot.] (*Eaton*)

81. PANOPLY OF ORIENTAL WEAPONS

Comprising a lance and two spears, two curved daggers, two knives, a sheaf of arrows, flintlock gun mounted in silver, broad-bladed dagger with horn handle, yataghan; together with an English flintlock pistol. [Lot.] (*Eaton*)

PAINTINGS

82. THE VISITATION

Giovanni di Paolo, Sieneese: c. 1423-1481

Four holy figures, garbed in pink and scarlet, tan, and sky blue, three with gold halos; grouped before a portico and wall; blue sky.

Panel: Height, 6¾ inches; length, 8¾ inches

Collection of Achillito Chiesa, American Art Association, Inc., 1927

83. ADAM DE COSTER, PAINTER

Follower of Sir Anthony van Dyck

Waist-length figure of a man with vandyck beard, in beige costume with ruff, turned to the left and leaning upon the base of a column.

Panel: Height, 10 inches; width, 7½ inches

84. MADONNA AND CHILD

Follower of Jan Provost, Flemish School

The Madonna, in greenish blue gown and rose cloak, is seated on a Renaissance throne, fingering an open volume; the Child in gray sits upon the parapet before her. Dark background.

Panel: Height, 17 inches; width, 13 inches

85. YOUNG GIRL, AFTER GREUZE

French School, XIX Century

Head and shoulders portrait of a girl with fair hair bound with a blue bandeau, wearing a diaphanous white garment, her shoulders bare.

Oval: Height, 16 inches; width, 13 inches

86. HOMEWARD BOUND

André Plumot, Belgian: b.1829

A cottage at the left overlooks a path where a shepherd boy with his dog, appearing over the brow of the hill, are driving cows and sheep before them. Signed, and dated 1862.

Height, 26½ inches; length, 45½ inches

87. PAIR DECORATIVE PORTRAIT PAINTINGS

American School, circa 1830

Portraits of an elderly man and his wife in black coat, the latter with white linen mob cap. (*Lanpher*)

Height, 17½ inches; width, 13 inches

ENGLISH AND AMERICAN FURNITURE AND
DECORATIONS

88. JASPÉ PORCELAIN VASE, FITTED AS LAMP

Baluster vase with marbled splash glaze in gray green and yellowish brown; fitted for electricity, with shade. *Height, 20 inches*

89. SHERATON INLAID ROSEWOOD BRACKET CLOCK

C. Condliff, Liverpool, circa 1830

Quadrangular arched case with large dial; inlaid in brass with floral scrollings. (*Lanpher*) *Height, 16 inches*

90. KOREAN INLAID CELADON BALUSTER VASE, FITTED AS LAMP

Penciled in sepia and inlaid in white with clusters of flowers and bamboo and two quatrefoil floral medallions; fitted for electricity, with shade. *Height, 27 inches*

[See illustration on page 18]

91. GEORGIAN INLAID MAHOGANY BAROMETER

I. F. Fischer, Woodbridge, circa 1800

Banjo-shaped case banded with light wood inlay, containing a thermometer and a barometer and a medallion of convex silvered glass. (*Field*) *Height, 39 inches*

92. BRONZE AND CRYSTAL LUSTRE TABLE LAMP

Depicting Atlas supporting the globe; mantle hung with prism lustres and fitted for electricity. (*Lanpher*) *Height, 28½ inches*

93. CHINESE CARVED CINNABAR LACQUER VASE, FITTED AS LAMP

Carved with branches of lotus enclosing quatrefoil panels of blossoms and two wooded landscapes with figures; fitted for electricity, with shade. *Height, 28 inches*

94. LATE SHERATON MAHOGANY WALL MIRROR AND CARD TABLE

Circa 1830

Small mirror with reeded pilasters and acorn-drop cornice; table with rounded and hinged top lined with red baize, on four acanthus-scrrolled paw feet. [Lot.] (*Lanpher*)

Height of mirror, 29½ inches; length of card table, 33 inches

95. GEORGE IV ROSEWOOD TEAPOY, WITH FITTINGS AND
TWELVE GEORGIAN SILVER TEASPOONS *English, circa 1825*
Small sarcophagus-form case, on pedestal with three gilded dolphin-head
feet. Fitted with two caddies, two cut glass blending tumblers of the
period, and twelve Georgian silver teaspoons by various makers. (*Lan-*
pher) *Height, 29½ inches*
From Ginsburg & Levy, Inc., New York

[See illustration]

96. PAIR SHERATON PAINTED AND DECORATED BEECHWOOD ARMCHAIRS *English, circa 1800*
Open square back with lyre-form splat, high downcurved arms on spirally
fluted supports, cane seat, on round tapering legs. Painted rose, with floral
and classical decoration. (*Lanpher*)
From Ginsburg & Levy, Inc., New York

[See illustration of one]

97. DECORATED AND GILDED BANJO CLOCK *American, XIX Century*
With glass panel stenciled with gilded leaf scrollings and vignette of a
harbor scene; eagle finial. (*Lanpher*) *Height, 42 inches*

[See illustration]

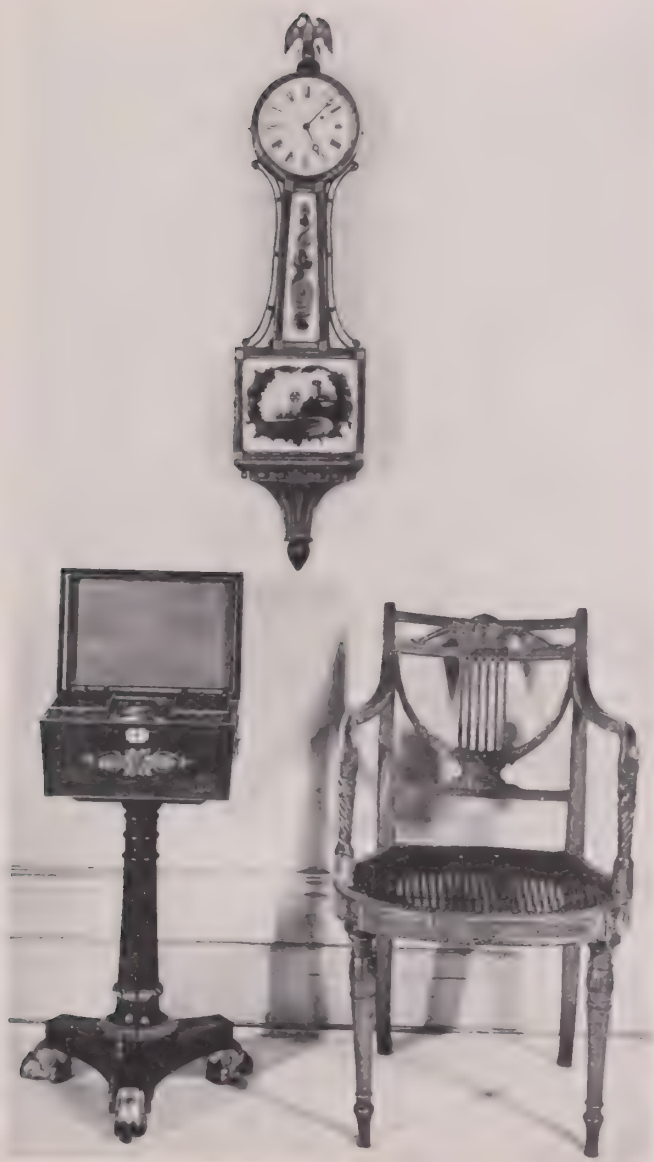
98. CHINESE CARVED TEAKWOOD GUÉRIDON
Square stand with floral carved underframing and quadrangular legs with
two undershelves. *Height, 50 inches*

99. GEORGIAN CARVED MAHOGANY CORNER CHAIR
With horseshoe-shaped arms, carved cabriole front legs and X-stretcher.
(*Field*)

100. DECORATED BLACK AND GOLD LACQUER ARMCHAIR AND WORK TABLE
Armchair in the Queen Anne style with crimson damask seat; lyre-form
work table. Decorated with *chinoiserie*s. [Lot.] (*Lanpher*)

101. MAHOGANY BEDSIDE TABLE *English, circa 1810*
Small oblong table with two drawers, two hinged flaps, and reeded and
tapered supports. (*Field*) *Height, 27½ inches; length open, 28 inches*

102. LACQUERED SMALL CABINET AND A WORK TABLE *Georgian Style*
Green lacquered book cabinet and a red lacquered work table of the
Martha Washington type. [Lot.] (*Field*)
Height of work table, 29 inches; of bookcase, 46 inches



[NUMBERS 95 TO 97 INCLUSIVE]



[NUMBER 103]

103. PAIR DECORATIVE PAINTINGS ON GLASS *English, Late XVIII Century*
Cupid Refusing Love to Desire, and Venus Recommending Hymen to
Cupid; framed. (*Lanpher*) Height, 13½ inches; length, 19 inches

[See illustration]

104. CHIPPENDALE CARVED MAHOGANY AND CRIMSON DAMASK ARMCHAIR
Open back with pierced and scrolled vase-shaped splat; open scrolled and fluted arms. Slip seat in red damask, square chamfered and stretchered
—legs. (*Voss*)

105. EMBROIDERED VELVET AND CARVED WALNUT EASY CHAIR
Comfortable lounge chair upholstered in taupe velvet with loose seat cushion, the back with crewel work floral embroidery; scrolled arm supports and legs.

106. DECORATED BLACK AND GOLD LACQUER CARD TABLE AND ARMCHAIR
Chinese turned pedestal card table for the English market, *circa* 1830, with hinged top, and painted with *chinoiserie*; caned armchair in the Sheraton 'Directoire' taste. [Lot.] (*Lanpher*)
Height of table, 32 inches; width, 30 inches

107. CRIMSON DAMASK AND CARVED MAHOGANY LOVE SEAT
AND ROUNDABOUT CHAIR *Georgian Style*
Small upholstered love seat covered in crimson silk floral damask, on leaf-carved cabriole legs; and claw-and-ball-foot roundabout chair with slip seat in crimson damask. [Lot.] *Length of love seat, 44 inches*

108. LATE SHERATON MAHOGANY BUREAU
Four-drawer chest with reeded and carved pilasters at the corners.
(*Field*) *Height, 45½ inches; width, 31 inches*

109. HEPPLEWHITE UPHOLSTERED MAHOGANY ARMCHAIR
Arched back, seat, and arm pads in worn yellow satin damask; mahogany grooved arm supports and tapering square legs. (*Field*)

110. PAIR CARVED BEECHWOOD AND GREEN DAMASK ARMCHAIRS
William and Mary Style
Rectangular back and seat in figured green damask, boldly scrolled arms, legs, and stretchers.

111. SHELF CLOCK AND WALL MIRROR WITH GLASS PAINTINGS
American, circa 1830
Clock with pilasters simulating tortoise shell and glass panel painted with a spray of flowers; upright gilded mirror with painted landscape medallion. [Lot.] (*Lanpher*) *Height of clock, 25 inches; of mirror, 34 inches*

112. TWO MAPLE SIDE CHAIRS *American, circa 1825*
With spindle-filled back and solid seat and flaring spindle legs. (*Field*)



[NUMBER 113]

AMETHYSTINE QUARTZ VASES: NUMBERS 73 (AT LEFT) AND 74

113. QUEEN ANNE INLAID WALNUT LOWBOY OR DRESSING TABLE

English, XVIII Century

Oblong top inlaid with a checker-panel border, the scrolled kneehole front with three small drawers similarly paneled; on plain cabriole legs ending in club feet.

Height, 20½ inches; length, 32½ inches

[See illustration]

114. GEORGE II ELM AND YEW WOOD ROUNDABOUT CHAIR

English, XVIII Century

So called barber's chair, the high back and arms filled with pierced flaring splats, conforming solid seat, club-footed cabriole legs. (*Field*)

115. DECORATED RED AND GOLD LACQUER CHINA CABINET

English XVIII Century Style

Small cabinet of three shelves, with glazed doors and two drawers, on table stand; decorated with gilded *chinoiserie*s. (Lanpher)

Height, 55 inches; width, 22 inches

116. INLAID MAHOGANY TALLBOY

Dutch, XIX Century

Upper section with three small and three long drawers, the lower with three small drawers, on six tub feet. Drawer fronts inlaid with banded cartouches. (Lanpher)

Height, 51 inches; width, 41 inches

117. SLATERON MAHOGANY BOW-FRONT BUREAU WITH DRESSING MIRROR

With four convex-fronted long drawers, and reeded pilasters and tapering legs. Dressing mirror with single drawer, and ebonized columns and finials. [Lot.] (Lanpher)

Height of bureau, 41 inches; length, 42½ inches

118. CARVED OAK CABINET

Tudor Gothic Style

The front with four panels carved with ornamental linetolds, the inner two opening as cupboards; pierced cyma-scrolled apron, shelf base.

Height, 57 inches; length, 5 feet 1 inch

119. MAHOGANY SPINET DESK WITH GOLD STENCIL DECORATION

Loud & Bros., Philadelphia, circa 1835

Late Empire piece with round reeded and tapering legs and S-scrolled brackets; stenciled with panels of anthemion and leaf scrolls. (Lanpher)

Height, 35½ inches; length, 5 feet

120. SET OF FOUR CARVED MAHOGANY DINING CHAIRS

Colonial Chippendale Style

Reproductions of a Gillingham model, consisting of an armchair and three side chairs with molded straight legs; slip seat in figured blue fabric; pierced Gothic splat. Made by Margolies, Hartford, Conn.

121. INLAID MAHOGANY SIDEBOARD WITH SHAPED FRONT

Colonial Hepplewhite Style

Shaped front equipped with cupboards and drawers inlaid with American eagle and shield and other ornamentation in light woods; six tapering square legs. Made by the Kensington Furniture Company, New York.

Height, 37 inches; length, 5 feet 6 inches



[NUMBERS 122 AND 123]

VASE FITTED AS LAMP: NUMBER 90

122. SET OF FOUR SHERATON CARVED AND INLAID MAHOGANY SIDE CHAIRS

English, Late XVIII Century

Open square back with ornamental trellis splat surmounted by a panel of fluting inlaid with a band of satinwood; seat in mulberry chintz, square tapering legs with spade feet.

[See illustration of one]

123. ADAM FINELY INLAID MAHOGANY CARD TABLE

English, XVIII Century

Hinged demilune top lined with blue baize and inlaid with a half patera surrounded by festoons of husks pendent from anthemion trophies and a central group of tendril scrollings and *adossés* monsters; trieze inlaid with festoons and rosettes; square tapering legs.

Height, 29 inches; length, 38¾ inches

[See illustration]

124. MAHOGANY TWO-PART DINING TABLE

Colonial Sheraton Style

Oblong top with rounded ends having two loose leaves at the centre, supported on two turned pedestals and splayed legs. Made by the Kensington Furniture Company, New York.

Height, 30 inches; length extended, 9 feet

125. MAHOGANY SERVING TABLE

Colonial Hepplewhite Style

Half-moon table on four tapering square legs, inlaid and banded with various light woods; a drawer in front. Made by the Kensington Furniture Company, New York.

Height, 30 inches; length, 50 inches

126. QUEEN ANNE INLAID WALNUT CHEST OF DRAWERS

English, Early XVIII Century

Oblong top, the front with three long drawers banded and inlaid with double panels of burl walnut; bracket feet.

Height, 36½ inches; length, 42 inches

127. GEORGE III MAHOGANY LINEN PRESS

English, XVIII Century

A rectangular cabinet fitted with sliding trays enclosed by two solid doors, above which are two drawers with bronze knobs. (*Witteried*)

Height, 47 inches; length, 49 inches

128. SHERATON INLAID MAHOGANY CORNER CABINET

Trilateral, with broken triangular pediment and urn finials, and two glazed doors; serpentine-fronted drawer and cupboards below. Inlaid with stringing and cable ornament.

Height, 7 feet 3 inches; width, 32 inches

129. MAHOGANY CABINET SIDEBOARD WITH STENCIL DECORATION

Sheraton Style

Upper section with two shelves and mirror back flanked by glazed cupboards, the lower fitted with sideboard drawers; floral decoration stenciled in gilding. (*Lanpher*)

Height, 5 feet 7 inches; width, 47 inches



[NUMBER 130]



[NUMBER 131]

130. CHARLES II CARVED WALNUT TALL-BACK ARMCHAIR

English, XVII Century

Spirally twisted canted uprights with carved blocks, the cresting rail with scrolling leafage and *putti* supporting a crown; oval cane back panel bordered with foliage. With leaf-carved arms, spiral supports and cane seat with spiraled and carved underframing. Antique Genoese ruby velvet seat cushion.

[See illustration]

131. CHARLES II RICHLY CARVED WALNUT ARMCHAIR

English, XVII Century

Leaf-carved and balustered uprights supporting a Flemish-scrrolled cresting with voluted medallion splat flanked by two curved and leaf-scrrolled uprights; acanthus-carved arms, leaf-carved Flemish scrrolled legs and frontal stretcher. Cane seat with jardiniere velvet cushion.

[See illustration]

132. TURNED MAHOGANY BEDSTEAD

Early American Style

Balustered uprights with pineapple finials, scrrolled headboard; with box spring, mattress, and green candlewick coverlet. (*Lanpher*)

Height, 48 inches; width, 55 inches

133. LATE SHERATON CONSOLE TABLE AND THREE HITCHCOCK CHAIRS WITH BLACK AND GOLD STENCIL DECORATION

Console of the period with marble top, mirror back, and ring turned paw-foot supports; stenciled with paterae and torches. Rush seat armchair and two side chairs stenciled with a bowl of fruit. [Lot.] (*Lanpher*)

Height of console, 37 inches; width, 36½ inches

134. JAPANESE CARVED TEAKWOOD AND LACQUER WRITING CABINET

Lady's writing cabinet with hinged slant front, small shelves and compartments; decorated with lacquer panels.

Height, 57 inches; width, 26 inches

135. UPHOLSTERED SOFA AND TABOURET IN STRIPED DAMASK

Rectangular frame with closed ends; covered in green and purple striped floral damask. Small tabouret to match. [Lot.] (*Lanpher*)

Length of sofa, 59 inches

136. TURNED MAPLE LOW POST BEDSTEAD

Early Federal Style

Complete with box spring and mattress. (*Witteried*)

Length, 6 feet 6 inches; width, 43 inches

137. BLACK AND GOLD LACQUER CORNER CABINET

English, XVIII Century Style

Trilateral, with single cupboard, on open support and square tapering legs; decorated with Chinese landscapes. (*Lanpher*)

Height, 5 feet 7 inches; width, 27 inches

138. PAIR MAHOGANY SINGLE BEDSTEADS

Lacking spring or mattress. Together with glass topped mahogany bed side table. [Lot.] *Length of bedsteads, 6 feet 6 inches; width, 41 inches*

139. THREE SMALL COFFEE TABLES

In mahogany, lacquer, and walnut, varying in shape. (*Field*)

Heights, 10 to 22 inches

140. FIVE REPOUSSÉ GILDED BRASS DRAPERY CORNICES

American, XIX Century

Patterned with fruit and grape designs; including a pair. [Lot.] (*Lanpher*)

From Ginsburg & Levy, Inc., New York

141. LOT OF DECORATIVE SMALL FURNITURE

Georgian style mahogany candlestand, a mirror backed what-not, and a partly gilded small Georgian mirror. [Lot.] (*Field*)

Height of candlestand, 32 inches; of what-not, 29 inches; of mirror, 26 inches

142. TWO DECORATIVE OBJECTS

A Carolean style *ajouré* brass lantern clock and an East Indian decorated sandalwood trinket box. [Lot.] (*Lanpher*)

Heights, 6½ and 9 inches

ORIENTAL RUGS

143. TWO CAUCASIAN RUGS

Runner with a leaf trellis and geometrical border; and rug of floral plaquettes with serrated leaf border. [Lot.] (*Eaton*)

Length, 8 feet 8 inches; width, 3 feet 1 inch

Length, 5 feet 6 inches; width, 3 feet 9 inches

144. KIRMAN FLORAL RUG

Ivory field woven with variegated clusters of forget-me-nots, violets, asters, and other blossoms, amid flowering cypresses and triads of 'pears'; midnight blue and old gold floral borders.

Length, 6 feet; width, 4 feet 2 inches

145. SAROUK MEDALLION RUG

Cartouche-shaped tawny rose field with blue and yellow spandrels and pendent sapphire medallion, all overrun with floral creepers; deep blue border of interlinked palmettes. *Length, 7 feet; width, 4 feet 5 inches*

146. KURD RUG

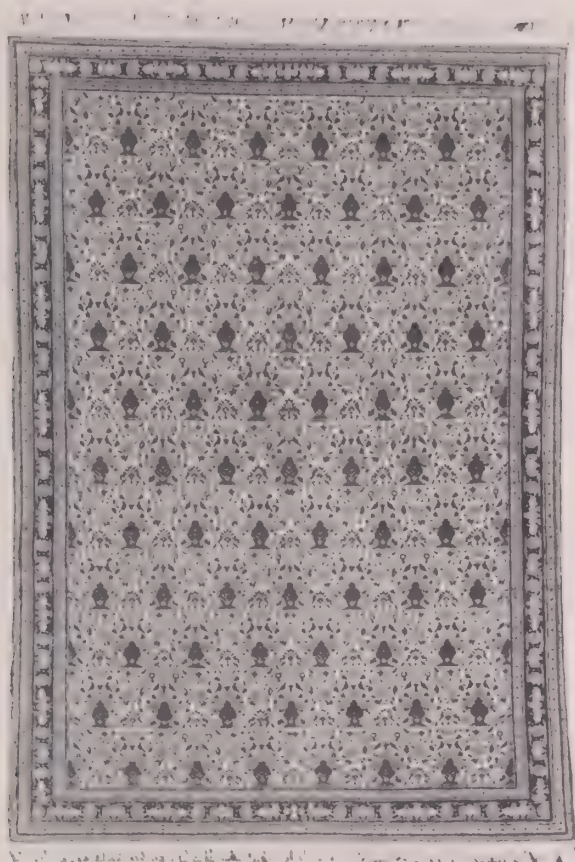
Double-arched greenish blue field with a trellis of 'pear' motives, within a greenish blue floral border with scarlet guards.

Length, 7 feet; width, 4 feet 2 inches

147. DAGHESTAN KAZAK RUG

Patterned with octagonal tiles woven with serrated and latchhooked lozenges in bright colors; ivory border of latchhooked plaquettes. (*Lanpher*)

Length, 8 feet; width, 3 feet 7 inches



[NUMBER 148]

148. PAIR ZILLI SULTAN RUGS OF ROSES

Ivory field woven with lateral rows of blue baskets filled with clusters of red roses; narrow midnight blue floral border. Rugs of fine weave.

Length, 6 feet 9 inches; width, 4 feet 7 inches

[See illustration of one]

149. TABRIZ RUG

Unusual design of five blue and tan floral cartouches in an ivory ground, tessellated and scattered with jewel motives; brilliant green border edged with a floral framework.

Length, 9 feet 10 inches; width, 6 feet 10 inches

150. PERSIAN LOTUS CARPET

Tan field crisscrossed with red branches bearing large lotus palmettes in various colors; midnight blue border of interlinked leaf palmettes in scarlet, blue, and green. Heavy pile.

Length, 9 feet 9 inches; width, 6 feet 9 inches

151. KIRMAN MEDALLION CARPET

Scalloped cartouche-shaped field of rose red with sky blue spandrels, and cusped sapphire blue and ivory medallion, all overrun with branches of lotus flowers, henna, jasmine, and leafage; ivory border of lotus palmettes.

Length, 10 feet 6 inches; width, 6 feet 9 inches

152. SEREBEND CARPET

Woven with the characteristic design of rows of tiny 'pear' motives in a crimson field; ivory border of scrolling vines, enclosed by eight floral guards.

Length, 14 feet 11 inches; width, 11 feet

153. TABRIZ HERATI CARPET

Field of blue black, bearing the allover Herati floral trellis in turquoise, rose, crimson, yellow, and green; midnight blue border of peonies and leafage, enclosed by ten guards.

Length, 12 feet 6 inches; width, 9 feet 6 inches

154. PERSIAN KURD CARPET

Pistache green field with bold floral and Herati design in scarlet, blue, and ivory; blue floral border with scarlet and gray guards. Repaired. (*Lanpher*)

Length, 13 feet 8 inches; width, 10 feet 8 inches

155. SAROUK MEDALLION CARPET

Cartouche-shaped rose field overrun with blossoms, with midnight blue spandrels, and blue and ivory medallion woven with floral arabesques; midnight blue border of interlinked lotus blossoms. (*Voss*)

Length, 11 feet 7 inches; width, 8 feet 6 inches

156. KIRMAN RUG

Woven with an eight-pointed cusped and pendent medallion in shades of blue, rose, and fawn in a cartouche-shaped wine red field with sapphire blue spandrels, the medallion and spandrels with rich floral ornament; fawn border of lotus palmettes and floral clusters upon a wine red vine.

Length, 14 feet 6 inches; width, 10 feet

157. DAGHESTAN RUNNER

Greenish blue field woven with a golden yellow lattice of rosettes enclosed by formalized floral guards in blue, white, and tawny red. (*Lanpher*)

Length, 9 feet 7 inches; width, 3 feet 7 inches

158. TWO ORIENTAL RUGS

A Caucasian rug with geometric floral design in bright blue, green, red, and white; the other, a Sehna Kurd rug with repeated pear-shaped floral motive in a rose and light green ground; the latter rug worn. [Lot.]

(Field) *Length, 6 feet 7 inches; width, 2 feet 6 inches*
 Length, 4 feet 10 inches; width, 3 feet 9 inches

159. THREE SMALL CAUCASIAN RUGS

Two with diagonally striped fields in bright colors, the third with a triple medallion in a scarlet ground; two worn. [Lot.] (Lanpher)

FRENCH AND ITALIAN FURNITURE AND DECORATIONS

160. THREE DECORATIVE WAX GROUPS

A Carolean noble and lady; a Nativity with *patti* and figure of Joseph with a bowl of apples; and a rustic scene with shepherds and their flocks. Framed. [Lot.] (Lanpher)

161. PAIR MEISSEN DECORATED PORCELAIN POTPOURRI VASES

In the Louis XVI taste, painted with landscapes, marines, and figures; one finial repaired. (Field) *Height, 8 inches*

162. EMPIRE PORCELAIN URN

French, circa 1810

Campana-shaped urn in lapis blue, white, and gold; winged griffin handles and square base. *Height, 11 inches*

[See illustration facing page 28]

163. DECORATED PORCELAIN TABLE GARNITURE

Dresden Style

Comprising a latticed fruit bowl and a pair of four-light candelabra. Lavishly encrusted with pink and yellow roses with green leafage, the stems ornamented with figures of maidens and winged amors. Repaired. [Lot.] *Height of bowl, 12 inches; of candelabra, 21 inches*

164. INLAID TULIPWOOD MINIATURE COMMODE

Louis XV Style

Commode of two drawers with ring handles, on cabriole legs; marble top. (Eaton) *Height, 16½ inches; width, 13 inches*

165. DIRECTOIRE CARVED AND GILDED MANTEL CLOCK

Drum flanked by figure of a Bacchic nymph holding a wine cup and a satyr pressing grapes into it, on classic plinth; arms repaired. (Lanpher) *Height, 17 inches*

166. THREE PAINTINGS ON GLASS

English and French, XVIII Century

Landscape with figures; and a pair of transfer pictures of the Prodigal Son. [Lot.] (Lanpher)

167. THREE SILK EMBROIDERY PICTURES

XVIII Century

Depicting a mourning female figure at a tomb; the Annunciation; and an English lady and her child with their groom and horses. [Lot.]
(*Lanpher*)

168. TWO BRONZE STATUETTES

Figure of a running youth; and a primitive hunter with slingshot, a game bird slung at his waist, signed M. Bouval. (*Eaton*)

Heights, 21½ and 27½ inches

169. FIVE CUSHIONS IN ANTIQUE BROCADE

Varying in size, covered in fragments of Louis XV and Louis XVI silk brocade and damask; some enriched with gold galloon. [Lot.]

170. TWO SILK AND CHENILLE EMBROIDERY PICTURES

French, XVIII-XIX Century

Rustic landscapes, one with figure of S. John the Baptist, the other with a fisherman in a boat upon a mill stream. (*Lanpher*)

171. ACAJOU AND BRONZE DORÉ CLOCK GARNITURE

Empire Style

Comprising a portico-form clock and a pair of four-light candelabra; mounted in *bronze doré* with Empire motives. [Lot.]

Heights, 16½ and 14½ inches

172. PAIR CARVED AND LAQUÉ TABLE LAMPS IN THE LOUIS XVI TASTE

Laqué white, green, and gold and wired for single light; with pink silk shade.

Height, 20 inches

173. CARVED AND GILDED TABLE LAMP AND PAIR PRICKET CANDLESTICKS

Italian Baroque

Balustered and knopped candlesticks carved with cherub heads, of the period; and a lamp of later date, fitted for electricity. [Lot.] (*Lanpher*)

Height of lamp, 39½ inches; of candlesticks, 36 inches

174. LOUIS XIV BOULLE CLOCK

Ornamental timepiece of gilded bronze, ebony veneer, and brass inlay, embellished with caryatid figures and resting on four seahorses.

Height, 50 inches

175. PAIR ALABASTER LAMPS IN THE EMPIRE TASTE

Two-handled vase with pink silk shade, fitted for two lights.

Height, 22 inches

176. **TERRA COTTA BUST AND PAIR BRONZE AND BRASS ANDIRONS**
 Bust of a young French nobleman in curled peruke; and pair of tall melon-top andirons on spiraled shaft and strap-scrrolled base. [Lot.]
Height of bust, 27½ inches; of andirons, 43½ inches
177. **LOUIS XV CARVED AND LAQUÉ BERGÈRE IN STRIPED SILK**
 In the Venetian style, with voluted and molded frame and supports; worn contemporary covering of flowered and striped blue and yellow silk.
178. **LOUIS XV WALNUT DRESSING TABLE** *French, XVIII Century*
 Containing five drawers above a valanced skirt; molded cabriole legs with shaped feet; partly reconstructed. *Height, 27 inches; length, 35 inches*
179. **INLAID WALNUT CREDENZINA CABINET** *Piedmontese Baroque*
 Rectangular pedestal cabinet, the shaped front consisting of a door inlaid, veneered, and molded to simulate four drawers, the top hinged; the base deeply molded. (Field) *Height, 33 inches; width, 26 inches*
180. **EMPIRE BRONZE-MOUNTED CIRCULAR TABLE**
 Circular top covered with a slab of white marble; the frieze and three columnar legs enriched with *bronze doré* mounts. Furnished with a lift-off top composed of three leaves for use as oval dining-table.
Height, 30½ inches; diameter, 39 inches; length extended, 6 feet 6 inches
181. **LOUIS XVI INLAID WALNUT BEDSIDE TABLE**
 Small square table with two drawers, tray top, and tapering square legs.
Height, 28 inches; width, 11 inches
- 181A. **LOUIS XIII TURNED WALNUT ARMCHAIR** *French, XVII Century*
 Seat and canted arched back covered in rose floss velvet; serpentine arms, turned and blocked legs and stretchers. (Voss)
182. **ACAJOU OCCASIONAL TABLE** *Directoire Style*
 Brass-rimmed oblong top on pierced trestle supports. (Witteried)
Height, 28 inches; width, 28 inches
183. **LOUIS XVI CANNÉ WALNUT SLIPPER CHAIR AND A BANQUETTE**
 Small chair with caned back and silk cushions; oval bench with stuffed top and fluted round supports. [Lot.]
184. **INLAID TULIPWOOD LISEUSE** *Louis XVI Style*
 Small occasional table, the top covered with a slab of *fleur de pêche* marble, the front enclosed by a shutter simulating a series of old book bindings; tapering curved supports with bronze feet. (Field)
Height, 28 inches; width, 21 inches

185. SET OF SIX DIRECTOIRE BRONZE-MOUNTED WALNUT SIDE CHAIRS

In the Egyptian taste, the open conforming back occupied by a lyre splat; gently curved and tapering supports terminating in bronze paw feet. Slip seat in black hair cloth.

[See illustration of two]

186. LOUIS XV INLAID WALNUT PETITE COMMODE

French, XVIII Century

Small commode of provincial type, the gently serpentine front with two drawers and veneered with panels of burl walnut; curved and tapering short legs.

Height, 30 inches; width, 20 inches

[See illustration]

187. INLAID BOIS DE ROSE POUDREUSE

Louis XV Style

A combination *poudreuse* and small writing table, in two parts. The top, with three hinged flaps, lifts off revealing a leather-lined writing table with three small drawers in front. Tapering curved supports with bronze shoes. (*Field*)

Height, 30 inches; width, 23 inches

188. LOUIS XVI FRUITWOOD SIDE CHAIR

The flaring rectangular back and seat in a gold colored fabric. (*Field*)

189. ACAJOU PARQUETERIE OCCASIONAL TABLE, MOUNTED IN
BRONZE DORÉ

Louis XVI Style

Oblong top veneered with a cube *parqueterie*, on stop-fluted round tapering legs; ornamented with gilded bronze floral appliquéés.

Height, 29 inches; width, 26 inches

190. LOUIS XIV CARVED WALNUT AND GREEN VELVET ARMCHAIR

French or Flemish, XVII Century

Seat and square arched back covered in fine old emerald green velvet; serpentine voluted arms, S-scrrolled legs and H-stretcher.

191. EMPIRE WHITE LAQUÉ SMALL CONSOLE

Oblong top covered with a slab of Portor marble, on voluted supports and shaped base.

Height, 29 inches; width, 17 inches



[185]

[186]

[185]

EMPIRE PORCELAIN URN: NUMBER 162



[NUMBER 192]

192. DIRECTOIRE CARVED ACAJOU CANAPÉ *French, circa 1800*
Small sofa, or love seat, in the Egyptian taste, the slightly flaring back, seat, and loose cushion covered in plain yellow fabric. The straight arms terminate in carved sphinx heads and the front supports in paw feet.
Length, 58 inches

[See illustration]

193. PAIR DIRECTOIRE CARVED ACAJOU FAUTEUILS *French, circa 1800*
En suite with the preceding *canapé*; back and seat in plain yellow fabric.

194. WHITE AND GOLD LAQUÉ POUDREUSE *Louis XV Style*
Shaped oblong top with three hinged flaps uncovering compartments; three drawers in front, tapering curved supports.
Height, 27½ inches; length, 33½ inches

195. LOUIS XVI CARVED AND LAQUÉ SIDE CHAIR
Flaring back with vasiform splat, framed and lacquered pale blue and white; stuffed seat.

196. CARVED OAK BENCH IN SEVENTEENTH CENTURY
FLEMISH TAPESTRY
Caned seat with loose cushion in tapestry depicting a seated cherub and pendent bunch of fruit; on eight stretchered legs. *Length, 50 inches*
197. ACAJOU PARQUETERIE AND BRONZE DORÉ SERVING TABLE
Louis XV Style
Cartouche-shaped top inlaid with a cube *parqueterie*, on cabriole legs; surmounted by a two-handled removable glass tray on four *bronze doré* herms.
Height, 37 inches; width, 33 inches
198. CARVED WALNUT LECTERN
Italian Renaissance
Book rest with metal candle sconce, on turned pillar and molded square base with leonine feet.
Height, 5 feet 2 inches
199. EMPIRE BRONZE-MOUNTED ACAJOU PIER TABLE
French, XIX Century
Rectangular pier, or console, table on tapering square columnar legs with X-stretcher; frieze with drawer and enriched with gilded bronze mounts.
Height, 31 inches; length, 44 inches
200. WALNUT PANELED AND CARVED BENCH
Flemish Renaissance
Paneled rectangular back and apron, shaped ends; two doors under the frieze enclosing cupboards.
Length, 58 inches
201. SET OF EIGHT WALNUT AND RED VELOURS DINING CHAIRS
Louis XIII Style
Two armchairs and six side chairs, the arched backs and seats in red velours; walnut turned legs with shaped stretchers.
202. CARVED WALNUT DINING TABLE
Louis XIII Style
Simulating a refectory table, with draw-out leaf at either end, on four carved bulbous legs with molded stretchers.
Height, 31 inches; length extended, 9 feet
203. CARVED WALNUT CREDENZA
Louis XIII Style
Forming a sideboard, front with three doors with drawers above.
Height, 36½ inches; length, 6 feet
204. CARVED WALNUT CREDENZINA
Louis XIII Style
La suite with the preceding.
Height, 34 inches; length, 38 inches
205. CARVED WALNUT CABINET À DEUX CORPS
Louis XIII Style
La suite with the preceding.
Height, 5 feet 6 inches; width, 43 inches

206. PANELED WALNUT CREDENZA *Italian, XVI Century*
 Long rectangular body enclosed by two solid doors, above which are five frieze drawers. The top overhangs at either end and lifts off; the base is heavily molded. Doors and drawers enriched with brass handles in the form of female busts. *Height, 44 inches; length, 8 feet*

207. SET OF TEN CARVED WALNUT AND CRIMSON LEATHER DINING CHAIRS *Louis XIII Style*
 The rectangular back and seat in crimson leather, the crest rail and frontal stretcher richly carved. Turned supports with molded stretchers. *(Witteried)*

208. LOUIS XVI INLAID FRUITWOOD GAMING TABLE
 Small oblong table with inlaid checkerboard top, drawer, undershelf, and tapering supports. *Height, 25½ inches; width, 16 inches*

209. TWO WALNUT AND EMBROIDERED GARNET VELVET WING ARMCHAIRS *Italian, XVII Century*
 Seat and canted back with wings covered in old garnet velvet, each centred with a border panel of sixteenth century strapwork embroidery; one with turned and blocked legs and stretchers, the other with S-scrrolled legs and stretchers.

210. SET OF SIX DIRECTOIRE FRUITWOOD SIDE CHAIRS *Italian, circa 1805*
 A pleasing small chair in nicely patined fruitwood, the flaring open back consisting of a conforming crest rail and a horizontal splat delicately pierced and carved with swags and medallions. Shaped seat in figured ivory fabric. Plain tapering square legs.

[See illustration of two]

211. SET OF EIGHT DIRECTOIRE PAINTED CANVAS WALL PANELS *French, circa 1800*
 Representing antique statues symbolizing the arts and sciences painted in *grisaille* against a pale green background; varying in size. *Approximate dimensions, height, 5 feet 9 inches; width, 44 inches*

[See illustration of one]

212. DIRECTOIRE FRUITWOOD DEMILUNE COMMODORE *French, circa 1805*
 Rounded front with two doors enclosing cupboards; between the doors an engaged pilaster. Stands on block feet. *Height, 33 inches; width, 33½ inches*

[See illustration]



[NUMBERS 210 TO 212 INCLUSIVE]

EMPIRE PORCELAIN URNS: NUMBER 370

213. EMPIRE BRONZE-MOUNTED ACAJOU PIER TABLE *French, circa 1810*
 Rectangular top covered with a slab of white marble and supported on uprights carved as female caryatids standing on the white marble base; marble top imperfect. *Height, 36 inches; length, 51 inches*
214. PAIR PAINTED SINGLE BEDSTEADS IN FLOWERED CHINTZ *Louis XV Style*
 Shaped head and foot panels with blue painted molded frames. Upholstered and covered in flowered chintz. Equipped with box spring and mattress, bolster and coverlets in similar fabric. (*Field*)
Length, 6 feet 6 inches; width, 36 inches
215. CLUNY NEEDLEPOINT FALL-FRONT COFFER DESK ON STAND
 Domed oblong coffer covered in floral needlepoint, depicting the organ scene, symbolizing Hearing, after the Unicorn tapestries in the Cluny Museum; converted into a fall-front desk with fitted interior in carved oak. On spirally turned table stand.
Total height, 54½ inches; width, 35½ inches
216. PANELED AND CARVED OAK AND PINE CUPBOARD *German, circa 1600*
 In two stages; enclosed by four solid doors, elaborately carved with escutcheons and cartouche ornament, molded and fluted stiles; two drawers.
Height, 6 feet 8 inches; width, 51 inches
217. PANELED AND CARVED OAK AND PINE CUPBOARD *German, circa 1600*
 Matching the preceding cabinet; in two tiers.
Height, 6 feet 7 inches; width, 39 inches
218. SET OF TEN LOUIS XV CARVED AND PARCEL-GILDED WALNUT CHAIRS *Spanish Rococo*
 Consisting of two armchairs and eight side chairs, the slightly conforming tall backs occupied by an interlaced open scroll splat; shaped slip seats in crimson damask. Cabriole front legs terminating in claw and ball feet; the carved splats, the knees, the feet, and the seat frame enriched with gilding.
219. LOUIS XV CARVED AND PARCEL-GILDED WALNUT SETTEE *Spanish Rococo*
En suite with the preceding chairs. The backs occupied by three open-work interlaced scroll splats; shaped arms, crimson damask slip seat carved cabriole legs with stretchers.
Length, 6 feet
220. LOUIS XV IVORY AND GOLD LAQUÉ BEDSTEAD
 Head panel with undulating arched crest; upholstered and covered in flowered and silk brocade. On short scroll legs. Gently voluted and molded frame carved with small groups of flowers and *laqué* ivory and gold.
Length, 6 feet 6 inches; width, 47 inches

221. LOUIS XV IVORY AND GOLD LAQUÉ BEDSTEAD

Somewhat similar in design to the preceding bedstead, but larger; the head panel upholstered and covered in striped fleuretted ivory silk.

Length, 6 feet 6 inches; width, 56 inches

222. CARVED AND LAQUÉ LIT DE REPOS

Louis XVI Style

Frame with spirally fluted round legs, *laqué* silver gray; covered in celadon uncut velvet, with loose cushion and bolster. *Length, 5 feet 2 inches*

223. SCULPTURED OAK CRÉDENCE

French Gothic Style

Low cabinet with double doors sculptured with saintly figures within niches, the stiles carved with Gothic fenestral ornament; open below, with shelf base.

Height, 33¼ inches; length, 54 inches

224. CARVED OAK AND JARDINIÈRE VELVET SETTEE

Régence Style

Back with undulating crest, the sloping arms and serpentine seat upholstered in good quality jardinière silk velvet figuring a baroque floral motive. Carved oak voluted arms and curved supports terminating in hoof feet.

Length, 7 feet 6 inches

Collection of Mrs Whitelaw Reid, Ophir Hall, Purchase, N. Y.

225. EMPIRE MAHOGANY CONSOLE, BOOKSHELF, AND THREE CHAIRS

MOUNTED IN BRONZE DORÉ

Small console with columnar supports and gilded lyre-back; small standing bookshelf; two armchairs and a side chair; all lavishly mounted with Empire appliqués. [Lot.] (*Lanpher*)

Height of console, 32 inches; width, 28½ inches

226. CARVED AND GILDED PIER TABLE

Louis XVI Style

Frieze and tapering round supports richly carved in relief with flower volutes, animals, and neo-classic motives, with a slab of *rouge de Flandre* marble. (*Witteried*)

Height, 37 inches; length, 5 feet 1 inch

227. CHINTZ-COVERED DAY BED AND A STOOL

A boudoir day bed in flowered fabric, on mahogany square legs and with loose cushion; a circular stool on fluted legs. [Lot.] (*Field*)

Length of day bed, 52 inches

228. THREE PAIRS OF SATIN DAMASK WINDOW HANGINGS

Two pairs in flowered green satin and a pair in old rose, interlined and lined with casement cloth and trimmed with fringed gimp; worn.

Length, 8 feet 10 inches; width, 48 inches

229. PAIR OF YELLOW TAFFETA WINDOW HANGINGS WITH VALANCE

Plain yellow taffeta edged with blue and lined with casement cloth. (*Field*)

Length, 8 feet 6 inches; width, 8 feet

230. MODERNISTIC BEDROOM SUITE

Comprising a pair of single bedsteads with box spring and mattress, two dressing tables with mirrors, two bureaux, and two benches. [Lot.] (*Witteried*)

231. CARVED STATUARY MARBLE JARDINIERE ON PEDESTAL

In the antique taste, composed of shallow bowl with gadrooned edge and loop handles, on fluted column and square base; in three pieces. (*Witteried*) Height, 46 inches; width, 32 inches

232. COLONIAL RADIO RECEIVING SET

In modernistic cabinet of Italian walnut and ebony inlaid with metal. (*Witteried*) Height, 30 inches; width, 24 inches

233. TAPESTRY BANQUETTE AND PAIR ANDIRONS

Carved beechwood banquette in the Louis XV style, covered in verdure tapestry; and a pair of Florentine armorial andirons. [Lot.]

Height of andirons, 17½ inches; length of banquette, 44 inches

234. THREE BRONZE FLOOR LAMPS

For diffused lighting. (*Witteried*)

Height, 6 feet

235. MAHOGANY COTTAGE BABY GRAND PIANO G. M. Anderson, New York

Small sized piano in mahogany case. Serial No. 50284. Together with a mahogany bench. Needs reconditioning. (*Field*)

Width of keyboard, 44 inches

236. TWO METAL FLOOR LAMPS

One for diffused lighting, one a bridge lamp. (*Witteried*)

Heights, 4 feet 9 inches and 4 feet 2 inches

237. PAIR FORGED IRON FIRE DOGS

XVI Century Style

Complete with connecting crossbar. Height, 26 inches; length, 51 inches

238. R.C.A. RADIO RECEIVING SET

In mahogany cabinet. (*Witteried*) Height, 38 inches; width, 27 inches

239. LOT OF DECORATIVE FRENCH PRINTS

Showing children in fancy costumes. Lithographed by Thilley after E. De Beaumont. In five frames. [Lot.] (*Field*)

240. THREE HUNDRED SIXTY-FIVE DAY CLOCK

A brass and gilded metal *squelette* clock with glass cover; needs slight repair. Height, 12 inches

[END OF FIRST SESSION]

SECOND AND LAST SESSION

Saturday, October 17, 1936, at 2:15 p. m.

CATALOGUE NUMBERS 241 TO 457 INCLUSIVE

STAFFORDSHIRE, LEEDS, BRISTOL, AND SUNDERLAND FIGURES AND LUSTRE WARE

241. TWO LEEDS DECORATED MUGS Circa 1780
Decorated in color and transfer, one with a love idyll captioned *Spring*,
the other with a lady in a garden holding pet bird; one cracked. (*Lan-*
O - *pher*) Height, 6½ inches

242. THREE LEEDS AND STAFFORDSHIRE DECORATED MUGS Circa 1800
Two in marbled ware, one with figures of infant shepherds and a woman
in colored slip; one imperfect. (*Lanpher*) Heights, 4, 5, and 5½ inches
O -

243. TWO STAFFORDSHIRE TEAPOTS AND A SUGAR BASIN Circa 1800 and 1820
Painted circular teapot, a pink lustre teapot, a shaped oval sugar bowl
O - with cover; two pieces imperfect. [Lot.] (*Lanpher*)
Heights, 6 and 7 inches

244. STAFFORDSHIRE SPLASH PURPLE LUSTRE CREAMER Circa 1810
J C Of Wedgwood type and entirely lustred, the body encircled by a band
with flinty brown surface; spout slightly chipped. (*Lanpher*)
Height, 5¼ inches

245. THREE STAFFORDSHIRE DECORATED MUGS Circa 1790 and 1810
Small Pratt ware mug molded with children in heart-shaped medallions;
another molded with a sailor and his sweetheart; another printed with
✓ - *chinoiserie* and flowers. One imperfect. (*Lanpher*)
Heights, 5 and 6 inches

246. SUNDERLAND PINK LUSTRE PITCHER Circa 1790
- Buff glaze shaped pitcher molded with fluting and flowers enriched with
pink lustre. (*Lanpher*) Height, 6 inches

247. FOUR BRISTOL PINK LUSTRE PLATES Circa 1810

Varying in size and decoration, some partly in polychrome. (*Lanpher*)

Diameters, $6\frac{1}{2}$ to 8 inches

248. PAIR SUNDERLAND LUSTRED WALL PLAQUES

AND A STAFFORDSHIRE PITCHER

Circa 1825

Wall plaque printed with a view of the Sunderland bridge and a merchantman; mother of pearl lustre border. A brown and white pitcher printed with an 'in memoriam' portrait of Queen Caroline; pitcher imperfect. [Lot.] (*Lanpher*)

Heights, 7 and 8 inches

249. SEVEN LEEDS PURPLE LUSTRE AND PAINTED SMALL PLATES

Circa 1820

Six small plates painted with red and green flowers and leaves; basket-pattern border enriched with pink lustre. Another plate slightly larger. [Lot.] (*Lanpher*)

Diameters, $6\frac{3}{4}$ and $7\frac{1}{2}$ inches

250. EIGHT STAFFORDSHIRE AND LEEDS POLYCHROME PRINTED AND LUSTRED SMALL PLATES

Transfer-printed with various subjects, some with molded floral borders heightened with lustre and polychrome. [Lot.] (*Lanpher*)

Diameters, 6 to 8 inches

251. BRISTOL PINK LUSTRE CHINA TEA SERVICE

Circa 1825

Comprising an oblong teapot with cover and stand, creamer, sugar bowl, six cups, six saucers, and a plate decorated with bands of conventional flowers and leaves in pink lustre, green and yellow. [Lot.] (*Lanpher*)

252. CHILD'S WEDGWOOD DECORATED CHINA TOY DINNER SERVICE

Circa 1800

Comprising an oblong soup tureen with cover and stand, two platters, two sauce tureens with covers and stands, twenty-three plates, a gravy boat, two oval and two square dishes, painted with bands of pink and green leafage. Rare. (*Lanpher*)

253. CHILD'S LEEDS DECORATED CHINA TOY TEA SERVICE *Circa 1815*
Teapot and cover, sugar bowl and cover, creamer, three cups, and three saucers painted with fleurets within orange borders; teapot slightly imperfect. Rare. (*Lanpher*)

254. PAIR DRESDEN PERFUME BOTTLES AND A JACOB PETIT
MINIATURE VASE

Perfume bottles formed as groups of children gathering grapes and flowers; one with imitation Bow mark. Small flower-encrusted vase painted with birds and insects. [Lot.] (*Lanpher*)

255. STAFFORDSHIRE POLYCHROME MASK JUG BY WEDGWOOD *Circa 1790*

Fine example, the baluster-shaped body molded in relief with a series of four human masks representing the Emotions. The neck and base with swags of fruits and radiating acanthus; the handle formed as a terminal figure of a satyr. Base impressed WEDGWOOD AND CO. Slightly chipped, but very rare. (*Lanpher*)

Height, 13½ inches

256. THREE LEEDS FIGURES

Circa 1800

Pair of figures of women symbolizing Hope and Faith, and another somewhat similar, on square bases molded with green acanthus; one with chipped base. [Lot.] (*Lanpher*)

Heights, about 8½ inches

[See illustration of two, facing page 40]

257. STAFFORDSHIRE FIGURE

Circa 1800

Wedgwood type figure of Atlas supporting a hemispherical bowl and surmounting marbled square base; repaired, but rare. (*Lanpher*)

Height, 9½ inches

[See illustration facing page 40]

258. TWO STAFFORDSHIRE FIGURES

Circa 1800 and 1830

Rare Wedgwood pink lustre and green figure of a woman symbolizing Winter; a figure of Mary Magdalene with her attribute, impressed WALTON on back. (*Lanpher*)

Height, 8½ inches

[See illustration facing page 40]

259. PAIR STAFFORDSHIRE FIGURES

Circa 1790

Probably by Wedgwood. Figures of women holding cornucopiae, symbolizing the Earth, surmounting molded square bases speckled with color. (*Lanpher*)

Height, 9 inches

[See illustration]

260. TWO LEEDS FIGURES

Circa 1790

A woman holding a cornucopia, symbolizing the Earth and a woman embracing an urn, symbolizing Sorrow; one repaired. (*Lanpher*)

Heights, 9½ and 10 inches

[See illustration]

261. STAFFORDSHIRE SPILL VASE BY RALPH WOOD

Circa 1785

Figure of a gardener standing by an urn on pedestal; repaired, but rare. (*Lanpher*)

Height, 8 inches

[See illustration]

262. THREE STAFFORDSHIRE FIGURES

Circa 1800

Enoch Wood type. Figures of Venus, Charity, and another in yellow robe, surmounting square bases. (*Lanpher*)

Height, 9 inches

[See illustration of one]

263. STAFFORDSHIRE GROUP

Circa 1830

Probably by Walton. Well-modeled and colored group of Romulus and Remus with the wolf; captioned on base. (*Lanpher*)

Height, 7½ inches

264. FOUR CHELSEA, LEEDS, AND BRISTOL FIGURES

Circa 1760 and 1790

Imperfect Chelsea figure of a shepherdess, Leeds figure of Pomona, pair of Bristol figures of Juno and Jove. (*Lanpher*)

Heights, 6 and 7½ inches

265. FOUR PORCELAIN AND FAÏENCE FIGURES

Pair in Dresden style, two others in early Staffordshire style. [Lot.] (*Lanpher*)

Heights, 8½ and 9 inches

266. FOUR DERBY AND STAFFORDSHIRE FIGURINES

Figure of a boy symbolizing Harvest, a little girl with a basket of flowers, a young woman as a shepherdess, and Prince Albert. [Lot.] (*Lanpher*)

Heights, 4, 5, and 6 inches

267. THREE DECORATED PORCELAIN FIGURES

Jacob Petit figure of a seated man in gold-enriched white costume; a pair of figures of girl fruit and vegetable venders, in Chelsea style. One imperfect. (*Lanpher*)

Height, about 10 inches



[NUMBERS 256 TO 262 INCLUSIVE]

268. THREE PORCELAIN AND FAÏENCE FIGURES

30 = Pair of a gallant and lady, probably by Jacob Petit; another of a woman holding a lute, Staffordshire type. (*Lanpher*) Heights, 8 and 8½ inches

269. NINE STAFFORDSHIRE AND ROCKINGHAM FIGURINES

50 - Small figures of lion, sheep, Toby, and children. [Lot.] (*Lanpher*) Height, about 3½ inches

270. THREE STAFFORDSHIRE ORNAMENTS

33 - A girl milking a cow, two lovers, and an angel guarding sleeping children; one repaired. [Lot.] (*Lanpher*) Heights, 8½ and 10 inches

271. TWO STAFFORDSHIRE ORNAMENTS

25 A group of Highland lassie and lad with a basket of fruit, and another modeled with children and castle; simulating timepieces. (*Lanpher*) Height, 12 inches

272. TWO STAFFORDSHIRE FIGURES

20 - Walton type. SS. Peter and Paul with their attributes, the oval bases inscribed with the saints' names; one imperfect. (*Lanpher*) Circa 1830
Height, 9 inches

[See illustration]

273. RARE SET OF FIVE STAFFORDSHIRE FIGURES BY WALTON Circa 1830

50 60 Christ and the four Evangelists, the Savior seated, a tablet at his feet inscribed *Christ teacheth*; the four Evangelists with their attributes and their names inscribed on the oval bases; one figure impressed WALTON on the back. (*Lanpher*) Heights, 8 to 10½ inches

[See illustration]

274. BOW PORCELAIN FIGURE

15 Neptune standing by a dolphin, surmounting a rock encrusted with sea-shells and marine plants; imperfect. (*Lanpher*) Circa 1760
Height, 8 inches

[See illustration]

275. STAFFORDSHIRE GROUP

20 - The Sacrifice of Isaac. A richly colored group, of Walton type, in nearly proof state. (*Lanpher*) Circa 1830
Height, 12 inches

[See illustration]

276. STAFFORDSHIRE GROUP

17 50 The Agony in the Garden. The kneeling Christ in praying attitude, a tablet on the base inscribed with the Savior's prayer. (*Lanpher*) Circa 1830
Height, 9½ inches

[See illustration]



[NUMBERS 272 TO 276 INCLUSIVE]

- 12 50 277. ROCKINGHAM GREEN AND BUFF PORCELAIN SYRUP JUG *Circa 1840*
Adapted from the form of the Portland vase, with hinged pewter cover.
(*Lanpher*) *Height, 8½ inches*

- 5 278. PAIR OF CHELSEA-DERBY PORCELAIN FIGURES *Circa 1780*
Shakespeare and Milton, both standing reclining against pedestals upon
which books and scrolls are piled; surmounting octagonal bases with gad-
roon borders. (*Field*) *Height, about 11 inches*

[See illustration on page 47]

- 50 279. BERLIN DECORATED PORCELAIN PITCHER AND COVER *Circa 1790*
Hard-paste white porcelain pitcher with domed cover, vertically ribbed
and painted in colors with floriated monoliths, a band of husk swags
around the rim in gold. (*Lanpher*) *Height, 9½ inches*

- 20 10 280. THREE STAFFORDSHIRE ORNAMENTS *Circa 1825*
Pair of oval wall plaques of George IV and Queen Caroline; a group of
the Parson and Clerk in the pulpit. [Lot.] (*Lanpher*)
Heights, 7½ and 9½ inches

- 17 50 281. LOT OF DECORATIVE QUEEN'S WARE AND FAÏENCE
Compote and eight basket-pattern buff glaze plates simulating old Leeds
ware. Three Delft dishes painted with flowers in yellow, blue, and
green. [Lot.] (*Lanpher*)

- 50 282. LOT OF CHILD'S STAFFORDSHIRE TOY CHINA
Three teapots, four mugs, three creamers, and five plates printed with
quaint subjects. [Lot.] (*Lanpher*)

- 17 10 283. LOT OF STAFFORDSHIRE AND LEEDS WARE *XVIII-XIX Century*
Painted hexagonal teapot, transfer-printed circular teapot, shaped jug
molded with Biblical characters, small Worcester teapot, and four drum
shaped small mugs; three teapots imperfect. [Lot.] (*Lanpher*)

- 17 50 284. LOT OF BLUE STAFFORDSHIRE CHINA *Circa 1840*
Comprising a covered square dish with view of Canterbury, two teapots
a gravy boat, four cups, four saucers, some with pink lustre rims. [Lot.]
(*Lanpher*)

ENGLISH XVIII CENTURY FURNITURE AND DECORATIONS

285. SEVEN EARLY AMERICAN PORTRAIT SILHOUETTES *Circa 1830-50*

✓ Interesting full-length figures of men and women, including a signed male portrait by Augustin Edouart, dated 1841; framed. [Lot.] (*Lanpher*)

286. PORTRAIT SILHOUETTE *Augustin Edouart, American: 1789-1861*

✓ Full-length portrait of Theodore Clapp, Esq., of New Orleans, by the famous silhouettist, signed and dated 1844; maple frame.

Height, 9½ inches; width, 6¾ inches

287. ORIENTAL LOWESTOFT PORCELAIN BOWL WITH SHIP DECORATION

Early XVIII Century

✓ Deep bowl painted with sprigs of roses and floral festoons in the *famille rose* enamels and, upon the exterior, with two square-rigged three-masters; cracked.

Diameter, 10 inches

[See illustration on page 47]

288. GILDED BRONZE BUST OF WASHINGTON

✓ In uniform; on round wood socle simulating marble. An old example.

Total height, 14½ inches

289. SILVER-PLATED STATUETTE OF WASHINGTON

After Sir Francis Chantrey, R.A.

✓ Full-length cloaked figure standing with left leg advanced, after the well-known original; wood socle.

Total height, 14 inches

[See illustration on page 50]

290. FLAMBÉ GALLIPOT, FITTED AS LAMP

✓ Glazed strawberry pink, with heavy vertical streakings of milky blue;

✓ fitted for electricity, with shade.

Height, 25 inches

291. PAIR GILDED BRASS AND CRYSTAL LUSTRE CANDLESTICKS

○ Cast with a group depicting Paul and Virginia, beneath a floral coronet

○ hung with prism lustres. (*Lanpher*)

Height, 16 inches

292. TWO PRISM LUSTRE LAMPS

○ One in the form of a silver-plated urn, the other a fluted column in

○ bronzed tole; with etched glass mantles hung with prism lustres, and

○ fitted for electricity. (*Lanpher*)

Heights, 23½ and 36 inches

20 - 293. PAIR GILDED BRASS AND CRYSTAL LUSTRE CANDELABRA
With two leaf-scrolled arms for lights hung with prism lustres and fitted for electricity; swan-headed urn finial. (*Lanpher*) Height, 19 inches

12 50 - 294. KASHAN POTTERY OVOID JAR, FITTED AS LAMP XVIII Century
Blue and white jar rudely sketched with dot and circle pattern and a band of hatching; fitted for electricity, with shade. Height, 27 inches

20 - 295. JAPANNED AND DECORATED TOLE TEA TRAY
Scalloped oval tray, japanned black and painted with a border of floral ornament and gilded festoons. (*Lanpher*) Length, 30 inches

55 - 296. EXQUISITE PETIT POINT PANEL English, circa 1830
Worked in fine stitch with a tile pattern of eight square compartments centred with nosegays of flowers, within a black border of floral clusters with green leafage. Length, 44 inches; width, 25 inches

40 - 297. CHINESE CLOISONNÉ ENAMEL VASE, FITTED AS LAMP Ch'ien-lung
Ornamented with scrollings of lotus flowers in colors in a turquoise ground; fitted for electricity, with shade. Height, 25 inches

20 50 - 298. DECORATED TOLE TEA TRAY
Boldly painted in gay colors with a cluster of flowers and a pair of exotic birds. (*Lanpher*) Length, 30 inches

17 50 - 299. GEORGIAN BLACK AND GOLD LACQUER BRACKET CLOCK
Domed square case gilded with flowers on a black ground, the arched dial embellished with an enamel medallion painted with birds and flowers. Striking movement. (*Lanpher*) Height, 19 inches

18 50 - 300. PAIR FORGED IRON ANDIRONS English, Late XVI Century
With basket top and three pendent hooks; Tudor Gothic base support. Height, 30 inches

30 - 301. CHIPPENDALE CARVED MAHOGANY ARMCHAIR English, XVIII Century
Open fan back with Gothic fenestral ribbon splat, open outscrolled arms on incurvate supports; slip seat in fine antique amber velvet, square stretchered legs.

27 50 - 302. CHIPPENDALE CARVED MAHOGANY TRIPOD TABLE
Tilting piecrust top on turned pedestal and carved cabriole tripod with claw and ball feet. (*Field*) Height, 26 inches; diameter, 23½ inches



[NUMBER 303]

CHELSEA-DERBY FIGURES: NUMBER 278

ORIENTAL LOWESTOFT BOWL: NUMBER 287

303. QUEEN ANNE INLAID WALNUT LOWBOY OR DRESSING TABLE

English, Early XVIII Century

Oblong banded top, elegant kneehole front with long drawer and three small drawers, with skeleton butterfly brasses and bail handles; on cabriole legs with club feet.

Height, 27 inches; length, 27½ inches

From Henry F. Bultitude, New York

[See illustration]

304. GEORGE III INLAID MAHOGANY CELLARET *English, XVIII Century*
Cubical cellaret with hinged banded top, on stand with square legs.

3750

Height, 28¼ inches; width, 17 inches

305. GEORGIAN UPHOLSTERED MAHOGANY ARMCHAIR

Slightly arched back, seat and arms in old rose velours; mahogany grooved arm supports and square legs with plain stretchers. (*Field*)

30

- 305A. QUEEN ANNE INLAID WALNUT LOWBOY OR DRESSING TABLE

English, Early XVIII Century

Oblong quartered and banded top with bird's-beak front corners, valanced frieze with three drawers inlaid with stringing, on cabriole legs ending in pointed duck feet. (*Voss*)

105

Height, 28½ inches; length, 29 inches

From Mallett of Bath

306. DECORATED RED AND GOLD LACQUER BOOKCASE AND WINDOW SEAT

English XVIII Century Style

Shaped window seat covered in black and gold damask; and small three-tier standing bookshelf with pagoda top in the Chinese Chippendale style. [Lot.] (*Lanpher*)

20

Height of bookcase, 51 inches; width, 16 inches

307. SHERATON INLAID MAHOGANY SWELL-FRONT BUREAU

English, XVIII Century

Curved front contains three long drawers banded with line inlay; the top bordered with a band of satinwood. Valanced skirt and tapered bracket feet. (*Field*)

105

Height, 35½ inches; length, 43 inches

308. GEORGIAN CARVED MAHOGANY ARMCHAIR *English, XVIII Century*

Square back and seat covered in antique crimson silk damask, short Sheraton arms on leaf-carved bulbous supports; cabriole front legs carved at the knees with cartouches.

80

309. ROSEWOOD CARD TABLE WITH STENCIL DECORATION *English, circa 1830*

Oblong hinged top, on bulbous support and four scrolling voluted legs shod with claws and casters. Stencil-decorated with clusters of fruit and anthemion motives. (*Lanpher*)

15

Height, 31 inches; length, 36 inches

- 309A. PARCEL-GILDED FRUITWOOD WALL MIRROR *German, XVIII Century*

Square arched frame with gilded rococo base ornaments and cresting, the latter flanked by two figures of angels blowing trumpets. (*Lanpher*)

4250

Height, 42½ inches; width, 26 inches



[NUMBER 310]

310. CHIPPENDALE FINELY CARVED MAHOGANY GALLERY-TOP

SILVER TABLE

English, XVIII Century

Oblong top with a dainty trellised gallery, split with age, the exterior of the gallery finished with a graceful scalloped edging; on triple-clustered colonette legs with rosetted dies and joined by a pierced and fretted X-stretcher.

Height, 28 inches; length, 32 inches

[See illustration]



[NUMBER 311]

STATUETTE OF WASHINGTON: NUMBER 289

311. CHIPPENDALE CARVED MAHOGANY CLAW-AND-BALL-FOOT

CARD TABLE

English, XVIII Century

Oblong top with square outset corners, hinged and lined with wine red baize; shaped frieze following the contours of the top, on graceful cabriole legs carved with cartouches at the knees, and ending in ball and claw feet.

Good patina. (*Voss*)

Height, 28½ inches; length, 32 inches

From Mallett of Bath

[See illustration]

312. SHERATON DECORATED SATINWOOD PEMBROKE TABLE

English, Late XVIII Century

50 — Oblong top with two rounded drop leaves, single end drawer, square tapering legs with casters. The top charmingly painted with testoons, scrolling creepers, and birds, centring a plaquette with a Greek procession *en grisaille*.

Height, 28 inches; length open, 32½ inches

313. PAIR CHINESE-CHIPPENDALE CARVED MAHOGANY SIDE CHAIRS

English, XVIII Century

200 — Canted square back pierced to an elegant fretted design and surmounted by an S-scrrolled crowning rail with pagoda motives; seat in blue and gray damask, on square chamfered legs with C-scrrolled brackets and fretted stretcher.

From Mallett of Bath

[See illustration]



[NUMBER 313]

314. QUEEN ANNE INLAID WALNUT LOWBOY OR DRESSING TABLE

English, Early XVIII Century

Oblong banded top, on valanced apron with three small drawers; cabriole legs ending in club feet.

Height, 27 inches; length, 29½ inches

130-

315. FINE SET OF ADAM CARVED PINE OVAL-BACK CHAIRS

English, XVIII Century

Comprising armchair and five side chairs. Molded oval back crested with a cauliflower finial, generous seat and fluted rails, on round fluted and tapering front legs exquisitely carved with collars of acanthus leafage. Back and seat covered in gaily colored floral rep.

From Dawson, Inc., New York

[See illustration of two]

420

316. GEORGE III MAHOGANY AND YELLOW DAMASK SOFA

English, XVIII Century

Elegantly scrolled oblong back with closed outscrolled ends and seat cushion, covered in old canary yellow satin damask; on square reeded legs joined by a triple H-stretcher.

Length, 7 feet

180



[NUMBER 315]

316A. TUDOR OAK CHEST, INLAID WITH MARQUETRY

English, XVI Century

50 Oblong hinged top, the front divided by borders of honeycomb and guilloche carved ornament into panels enriched with small marquetry plaquettes inlaid with quaint animal figures and 'seaweed' scrollings.

Height, 27 inches; length, 52 inches

317. GEORGE I FINELY CARVED MAHOGANY AND PETIT POINT SIDE CHAIR

English, Early XVIII Century

210 Hoop back with openwork quadruple splat in the form of a beaker, voluted and crowned with a scallop shell; shield-shaped slip seat in exquisite *petit point* of the period, worked with branches of blossoms in colors in a bluish green ground, the curved seat rails carved with a Greek wave motive. On acanthus-carved cabriole legs terminating in web feet. (*Voss*)

From Mallett of Bath

[See illustration]

155 318. DECORATED BLACK AND GOLD LACQUER GAMING TABLE

Chinese for the English Market, circa 1830

Oblong top with two drop leaves and sliding panel opening to backgammon board; on stretchered pierced vasiform supports. Lavishly painted with *chinoiserie*. (*Lanpher*)

Height, 30 inches; length, 44 inches



[NUMBER 317]

319. HEPPLEWHITE MAHOGANY AND CRIMSON DAMASK SOFA

English, Late XVIII Century

200

Serpentine horseshoe back with arm pads and curved and molded frontal supports; on round tapering front legs, with demi-rosettes carved at the knees. Covered in fine old crimson floral damask. *Length, 6 feet 4 inches*

[See illustration]

320. CARVED OAK COURT CUPBOARD

Jacobean Style

25

With arcaded cornice and lower drawer both supported on fluted bulbous members, the upper part with two doors carved with Renaissance arches; shelf base. *Height, 54½ inches; width, 49 inches*

321. SET OF SEVEN ELM WINDSOR SIDE CHAIRS

English, XVIII-XIX Century

10

Hoop back with six spindles and V-brace centring a pierced wheel splat; saddle seat on turned and splayed legs.

322. CHARLES II OAK REFECTORY TABLE

English, XVII Century

40

Oblong top, on plain frieze with scalloped skirt and baluster-turned legs joined by a box-stretcher; tub feet.

Height, 30½ inches; length, 8 feet 4 inches

323. SHERATON INLAID MAHOGANY TAMBOUR-TOP SECRETARY

Dutch, Late XVIII Century

50

Upper section with double tambour opening to bookshelves, surmounting a roll-top desk fitted with drawers; three long drawers below. Inlaid with panels of banding; ring handles. (*Lanpher*)

Height, 55 inches; width, 40 inches

[NUMBER 319]



324. JAMES II CARVED WALNUT SETTEE, COVERED IN LATE
SEVENTEENTH CENTURY NEEDLEPOINT

3 0 - Double-arched back with wings, scrolled sides, and seat cushion, all covered in excellent *gros point* of the period, worked with large baroque clusters of flowers, foliage, and fruits in colors in a *tête de nègre* ground; square tapering legs with arched and scrolled frontal stretchers. Frame of modern date.

Length, 5 feet 7 inches

[See illustration]



[NUMBER 324]

325. JAMES II CARVED WALNUT SETTEE, COVERED IN
SIXTEENTH CENTURY FLEMISH TAPESTRY

300 - Double-arched back with outscrolled ends and seat cushion, all covered in good sixteenth century tapestry depicting a hunting scene, with dogs springing upon a wounded animal and huntsmen approaching with spears; on trumpet-turned legs with arched and scrolled frontal stretchers. Frame of modern date. Together with a seventeenth century Genoese green velvet cushion with appliqué cartouche of IHS. *Length, 5 feet 4 inches*

[See illustration]



[NUMBER 325]

326. INLAID MAHOGANY AND BIRD'S-EYE MAPLE TALL-CASE CLOCK

American, circa 1800

Handsome case of figured light mahogany, the pendulum door inlaid with a panel of bird's-eye maple. Arched and fretted hood enclosing flower-painted metal dial, which shows phases of the moon on a revolving disk.

(Field)

Height, 7 feet 10 inches

327. SET OF SIX LATE SHERATON SIDE CHAIRS WITH BLACK AND GOLD STENCIL DECORATION

30 Broad paneled crowning rail on turned supports, seat in green and gold brocade, on ring-turned tapering legs with peg feet. Stenciled in gold with a panel of floral scrollings. (*Lanpher*)

328. QUEEN ANNE INLAID WALNUT SECRETARY BOOKCASE WITH MIRROR DOORS

English, Early XVIII Century

500 Upper section with ogee-curved pediment surmounting double cupboard doors paneled with mirrors and opening to adjustable shelves; the lower body in the form of a slant-front desk fitted with drawers, cupboard, and sliding well, with small and long cockbeaded drawers below, furnished with bat's-wing brasses and bail handles. The front veneered with burl walnut and cross banded. With restorations.

Height, 7 feet 6 inches; width, 43 inches

[See illustration]



[NUMBER 328]

329. WILLIAM AND MARY DECORATED BLACK AND GOLD LACQUER CABINET
WITH MIRROR DOORS *English, Late XVII Century*

High arched pediment surmounting two arched doors inset with beveled mirrors, charmingly painted in bright colors with groups of Chinese figures; on support with two cyma-curved drawers and cabriole legs ending in pointed feet. Decorated with *chinoiseries* in red and gold in a greenish black ground. Restored. (*Lanpher*)

Height, 6 feet 6 inches; width, 36 inches

From Ginsburg & Levy, Inc., New York

[See illustration]

330. IMPORTANT SET OF SIX CHARLES II CARVED WALNUT
AND CANE SIDE CHAIRS *English, XVII Century*

With spirally turned and blocked uprights, caned back panels, some rectangular, some oval, bordered with pierced scrolling leafage and crested with a crown, flanked by *putti* and shell, respectively; cane seat, spirally turned and blocked legs with spiraled H-stretcher and frontal stretcher carved to match the crowning rail. The chairs show variations in carving and caning, but can be used to form a fine set.

331. QUEEN ANNE DECORATED BLACK AND GOLD LACQUER
CORNER CABINET

Trilateral, with paneled cupboard surmounted by a latticed and glazed door opening to two shelves, with broken-arch pediment; decorated with *chinoiseries*. (*Lanpher*) *Height, 5 feet 7 inches; width, 27 inches*

From Ginsburg & Levy, Inc., New York



[NUMBER 329]



[NUMBER 332]

332. CAROLEAN CARVED AND GILDED LOVE SEAT IN EARLY
EIGHTEENTH CENTURY CREWEL WORK

Small love seat with wings and sides, the whole covered in fine Queen Anne crewel work with interlacing branches of flowering trees in colored wools, on a white twill ground; Flemish-scrolled gilded frame in the Carolean style. (*Lanpher*) *Length, 40 inches*

From Ginsburg & Levy, Inc., New York

[See illustration]

333. LATE SHERATON MAHOGANY BEDROOM SUITE

Assembled suite consisting of a baluster-turned single bedstead with box spring, mattress, and coverlet; small three-drawer bureau of the period with drawer fronts in curly maple, and a drop-leaf work table with two small drawers faced with satinwood. [Lot.] (*Lanpher*)

Height of bedstead, 48 inches; width, 47 inches

334. CHINESE RICHLY EMBROIDERED SCARLET SATIN TAOIST TEMPLE HANGING

With brilliantly colored border depicting the Three Star Gods and their acolytes, together with the Eight Immortals, amid branches of flowers and fruit enlivened with birds, with an island temple amid the waves; the centre painted in gold with a lengthy inscription.

Length, 13 feet 4 inches; width, 11 feet 5 inches

ORIENTAL AND NEEDLEPOINT RUGS

335. ANTIQUE BAKU RUG

Small square patterned with 'pear' motives surrounding a stepped sky blue medallion in a deep blue ground with brown *abrash*; rosetted diagonally striped border. (*Lanpher*) *Length, 4 feet 2 inches; width, 3 feet 3 inches*

336. SAROUK RUG

Salmon pink cartouche-shaped field with powder blue spandrels, woven with scrolling branches of lotus, carnations, and peonies; blue-black floral border.

Length, 6 feet 8 inches; width, 4 feet 4 inches

337. KASHAN JARDINIÈRE RUG

Woven with three vases filled with blue and red carnations and interspersed with sprays of flowers and bird figures, beneath a scalloped arch with diapered spandrels; jade green border of birds and flowering shrubs.

Length, 6 feet 9 inches; width, 4 feet 4 inches

338. PAIR TEHERAN RUGS

Ivory field, trellised with the Herati pattern principally in crimson, deep blue, and tan; pistache green border of interlinked 'turtle' motives.

Length, 7 feet 2 inches; width, 4 feet 6 inches



[NUMBER 339]

339. PAIR KASHAN 'TREE OF LIFE' RUGS

Deep wine red field woven with the mounting and spreading branches of a 'Tree of Life' laden with tiny blossoms in shades of blue, tan, orange, and ivory; midnight blue and ivory floral borders.

Length, 6 feet 9 inches; width, 4 feet 4 inches

[See illustration of one]



[NUMBER 339A]

339A. ANTIQUE PERSIAN SILVER-WOVEN SILK RUG

A fine early replica of a seventeenth century South Persian *multifloors* rug from the neighborhood of Kashan. The field is in crimson and woven with a delicate allover design of clusters of tiny roses, asters, iris, lotus, and other blossoms, upon a trellis of green creepers, the effect being as if the ground were studded with gems; some of the flower centres voided to expose a silver ground. Fawn border of lotus palmettes enclosed by forked branches of leafage, also partly voided to show the silver thread; deep blue guards patterned with interlinked lotus and masks respectively. Very fine weave and quality. (Voss) Length, 6 feet; width, 4 feet 1 inch

[See illustration]

340. KASHAN MILLEFLEURS RUG

Woven with a vase filled with a 'Tree of Life' bearing symmetrically scrolling stems of tiny blossoms in shades of mauve, blue, and rose, with figures of song birds; blood red border of rosettes, floral clusters and lyre-shaped vases.

Length, 7 feet 1 inch; width, 4 feet 8 inches

341. SPANISH CARPET

Beautiful rose pink field woven with three poles of three spatulate leaf medallions in bluish green with serrated edges, infloriated in rose, tan, and blue, the spaces between with green cruciform motives. Turquoise border with a repetitive design of canopies of trophies and foliage.

Length, 12 feet 2 inches; width, 8 feet 5 inches

[See illustration]

342. CAUCASIAN KURD BIRD RUG

Mazarine blue field woven with rows of formalized 'pear' motives in gay colors, within a powder blue border of rosettes and perched birds, with striped guards. (*Lanpher*)

Length, 9 feet; width, 4 feet 2 inches

343. ANTIQUE GHIORDES RUG

Odjaklik with double-arched rose red field, floral medallion and turquoise spandrels scattered with leaves; *tête de nègre* border of brilliantly colored palmettes.

Length, 8 feet 1 inch; width, 4 feet 8 inches

344. ANTIQUE GHIORDES RUG

Smaller rug with design similar to that of the preceding; sky blue border of leaf scrolls.

Length, 6 feet 3 inches; width, 3 feet 6 inches

345. AUBUSSON CARPET

Strié fawn field woven with nosegays of roses, tulips, violets, and other blossoms with green foliage, amid individual sprigs of blossoms; tan border of chain motives.

Length, 10 feet 9 inches; width, 8 feet



[NUMBER 341]

346. FINE NEEDLEPOINT CARPET

40 Celadon ground worked with a bold design of scrolling green branches bearing peonies and roses and other blossoms, and clusters of grapes; broad golden yellow border of scrolling blue and rose leafage with recurrent palmettes. *Length, 12 feet 7 inches; width, 8 feet 7 inches*

Note: This carpet is a fine reproduction of an important needle-point carpet of the James I period dated 1614, which is in the South Kensington Museum, London.

[See illustration]

347. ANTIQUE KARABAGH MINA KHANI CARPET

180 Woven with rows of the large colorful rosettes of the Mina Khani design upon a trellis of green branches, with a pendent scarlet diamond medalion, the stepped corners of the field scattered with blossoms on a white ground; sky blue floral border with crimson guards. Some repairs. A fine specimen. *Length, 21 feet; width, 7 feet 9 inches*

348. NEEDLEPOINT RUG

100- Worked in *gros point* with a large diamond-shaped cluster of peonies, roses, forget-me-nots and other garden flowers with green foliage, on a gray ground, the corners of the field with trailing vine leaves.

Length, 8 feet 8 inches; width, 5 feet 10 inches



[NUMBER 346]

349. LAVEHR KIRMAN MEDALLION CARPET

Cerise cartouche-shaped field with cusped and strap-scrolled floral span-
drels, almost entirely covered by a large scalloped and pendent floral
medallion in shades of rose, blue, and pale green; rose red, ivory, and
sapphire blue floral borders. A semi-antique rug.

Length, 14 feet 3 inches; width, 9 feet 9 inches

350. FEREGHAN GULI HINNAI CARPET

Field of midnight blue divided by a hexagonal lattice into groups of for-
malized floral clusters of henna and other blossoms, with stiff scarlet
stems; greenish ivory border of conventionalized floral clusters in the style
of the field. A semi-antique rug. *Length, 20 feet; width, 10 feet 6 inches*

[See illustration]

351. HAMADAN HERATI CARPET

Woven with the allover Herati floral trellis in scarlet and green in a mid-
night blue ground, within a brilliant scarlet border of peonies and leafage.

Length, 19 feet 8 inches; width, 12 feet 7 inches



[NUMBER 350]

352. BAKHTIARI CYPRESS CARPET

250- Field of an unusual shade of tawny orange, woven with stiff longitudinal stems of flowers flanked by rows of weeping willows, small shrubs and dark blue cypresses; sapphire blue border patterned with large scarlet and green medallions and enclosed by six guards. At one end is a cartouche with inscription. *Length, 23 feet 1 inch; width, 15 feet 6 inches*

353. SERAPI MEDALLION CARPET OF IMPORTANT SIZE

375- Cartouche-shaped field of brilliant scarlet, with spandrels in rose and light and dark blue, the field centred with a huge cusped and pendent medallion in variegated colors, patterned with heroic floral ornaments; midnight blue border of chrysanthemum rosettes alternating with 'turtle' palmettes and interconnected by leafy branches.

Length, 28 feet; width, 15 feet 9 inches

[See illustration]



[NUMBER 353]

354. BAKHTIARI VASE CARPET

300 Ivory field, woven with a classic Persian design of stiff longitudinal branches interrupted by vases of flowers and small palmettes; these branches enclose six chains of large square spatulate and lyre-shaped lotus and peony palmettes in shades of dark red, blue, aubergine, green, tan, and yellow; blood red border patterned with recurring palmette medallions in deep blue, yellow, and ivory.

Length, 23 feet 3 inches; width, 16 feet 5 inches

[See illustration]

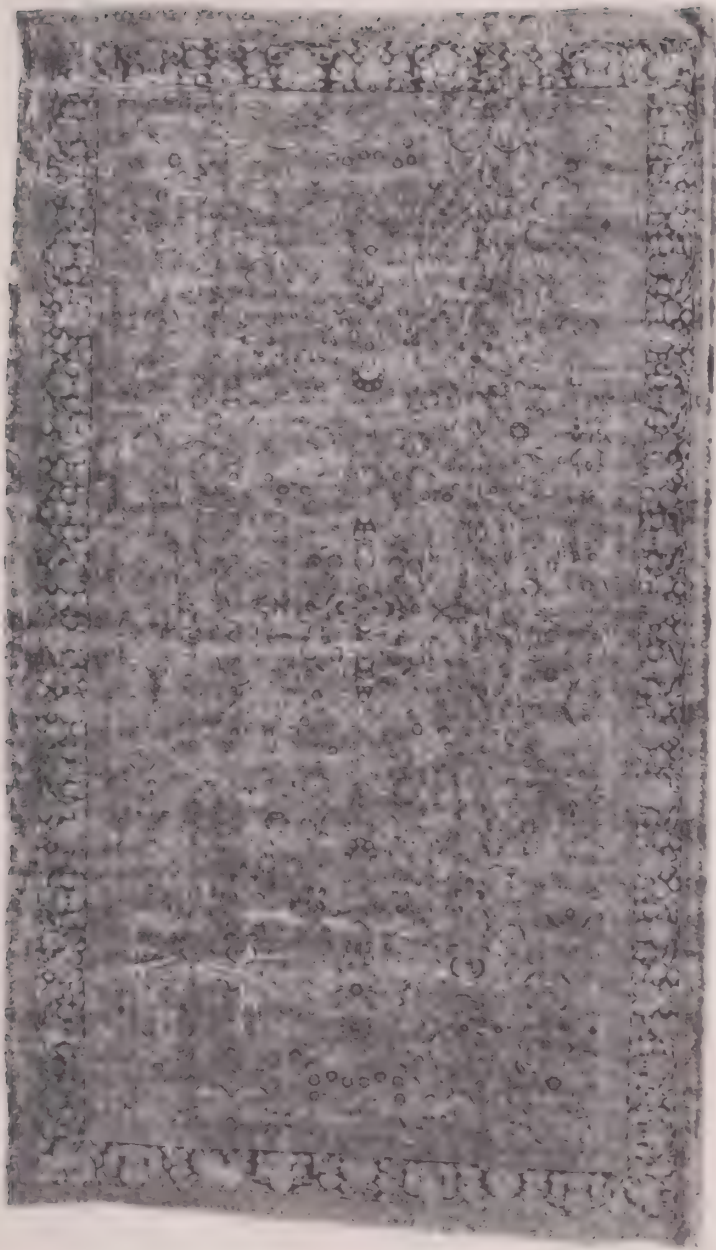


[NUMBER 354]

355. SAROUK CARPET OF IMPORTANT SIZE

7150 - Rose crimson ground, woven in shades of blue, green, and tan with floral garlands of lotus clusters supported upon cloud bands, cypresses, and nose-gays of variegated blossoms; deep sapphire blue floral border enclosed by six guards. Heavy pile. *Length, 25 feet 4 inches; width, 14 feet 7 inches*

[See illustration]



356. KIRMAN MILLEFLEURS CARPET

Field of tan, woven with an elegant design composed of clusters of roses, carnations, asters, henna flowers, violets, and innumerable other blossoms in soft blues, reds, and tans, the scrolled corners of the field in crimson; blue-black border of floral clusters in harmony with the field. Close, firm pile.

Length, 17 feet; width, 10 feet

[See illustration]

357. INDIAN CARPET OF ISPAHAN DESIGN

Wine red field, woven with a classic sixteenth century design of lotus palmettes supported upon cloud bands and joined by green creepers bearing smaller blossoms and pairs of exotic birds; emerald green border divided by gaily colored cartouches into flower beds, some ornamented with bird figures. Repaired.

Length, 19 feet 9 inches; width, 9 feet 9 inches

358. DAGHESTAN RUNNER

Mazarine blue field woven with latchhooked diamond motives in bright colors, within an ivory border of rosette motives. (*Lanpher*)

Length, 10 feet 7 inches; width, 3 feet 5 inches

359. TWO CAUCASIAN PRAYER RUGS

One with latticed design in a *tête de nègre* ground, the other with formalized floral shrubs in an ivory ground, beneath rectangular prayer arches. (*Lanpher*)

Length, 5 feet 10 inches; width, 3 feet 1 inch

Length, 6 feet 4 inches; width, 2 feet 9 inches



[NUMBER 356]

TAPESTRIES

360. BRUSSELS TAPESTRY PANEL

XVII Century

Fragment depicting a winged amor before crimson drapery, a rim of acanthus at right in brown, tan, and blue. (*Eaton*)

30

Height, 42 inches; width, 23½ inches

361. BRUSSELS TAPESTRY PANEL

XVII Century

Depicting the kneeling figure of a nymph in blue robes and rose drapery, before a background of reeds and morning glories. Finished with a border of later date.

70 -

Height, 4 feet 10 inches; width, 4 feet 6 inches

362. AUBUSSON TAPESTRY PANEL

XVII Century

Interior of a marble palace hung with golden draperies and adorned with precious vessels; a bearded man and two ladies, attended by a *putto*, are feasting on fruit and peacocks.

85

Height, 6 feet 7 inches; width, 4 feet 2 inches

363. LOUIS XVI AUBUSSON TAPESTRY

Circa 1780

Rustic scene with grapevines in the middle distance and a tree shadowing the foreground; beneath it are seated a youth in fawn doublet and blue breeches and a maid in rose holding a wine jug, a basket of grapes at their feet. Shaded tan columnar border entwined with blossoms. Woven in wools with lavish highlights of silk.

1 ✓ 0

Height, 9 feet 8 inches; width, 5 feet 8 inches

[See illustration]



[NUMBER 363]

364. AUBUSSON TAPESTRY

XVII Century

HELEN RETURNED TO MENELAUS AT THE FALL OF TROY. Dramatic scene with the walls of the burning city in the background and the wooden horse visible in the left middle distance; in the foreground, before a column, Helen in fawn robes and green cloak, attended by two maidens, is given over by Achilles to Menelaus. Greenish blue border of clusters of tan grapes and leafage.

Height, 10 feet 2 inches; width, 8 feet 4 inches

365. ITALIAN HUNTING TAPESTRY

Early XVII Century

Depicting a grassy meadow with a mounted huntsman in plumed hat and tan doublet shooting his musket at a cornered wolf which is being set upon by a pack of hounds, directly at his feet; at right, two attendants approach with spear and gun to dispatch the animal. Before a rim of woods in the distance, other huntsmen and beaters are seen with their hounds closing in on a wolf. Border of fluctuating sapphire blue woven with scrolling golden foliations, amid which are perched cockatoos and song birds, each side centred by a cartouche of amorous and pastoral trophies on cherry red grounds. Woven in colored wools, lavishly highlighted in silk.

Height, 12 feet 4 inches; width, 8 feet 9 inches

[See illustration]

366. SILVER-WOVEN ARMORIAL TAPESTRY

Old gold ground, woven with a strapwork trellis in scarlet and silver thread, upon which are two escutcheons with helms; scarlet and green reciprocal border with silver strapwork ornament.

Height, 11 feet; width, 7 feet 4 inches



[NUMBER 365]

FRENCH XVIII CENTURY FURNITURE
AND DECORATIONS

367. THREE CHELSEA AND CAPO DI MONTE PORCELAIN FIGURINES

Circa 1770

2 10 Pair of Chelsea small figures of Bacchic infants holding baskets of flowers; and a Capo di Montè white group of two children symbolizing Summer and Winter. (*Field*) *Heights, 6 and 6½ inches*

368. DECORATED AND GILDED METAL WALL CLOCK

Dutch, Late XVII Century

17 50 Dial painted with Dutch landscape and bordered with gilded and painted cherub heads, bird figures, and mermen. (*Lanpher*)

Height with bracket, 15 inches

369. PAIR DECORATED VIEUX PARIS PORCELAIN VASES

30 Cylindrical, painted with a pair of lovers and ladies in rococo costume in a lapis-blue ground, the handles gilded; one chipped. (*Lanpher*)

Height, 20 inches

370. PAIR EMPIRE PORCELAIN URNS

French, circa 1810

50 Campana-shaped urn with flaring rim, female sphinx handles, and square base; in white porcelain enriched with gilding. *Height, 11½ inches*

[See illustration facing page 32]

371. GARNITURE OF FOUR EMPIRE DECORATED PORCELAIN VASES

Italian, circa 1810

40 Pair of two-handled vases on square bases and a pair of small vases of closely similar design, painted in colors with lake scenes, shipping, and figures and partly gilded; one small vase slightly imperfect. (*Lanpher*)

Heights, 5 and 11½ inches

372. EMPIRE BRONZE DORÉ MANTEL CLOCK

French, XIX Century

12 50 Drum plinth with urn finial, beside which stands a *putto*; upon a socle with a cupid seated upon a swag. (*Lanpher*) *Height, 16½ inches*

373. TWO SILK AND CHENILLE EMBROIDERY PICTURES

French and Italian, XVIII Century

✓ One depicting the angel staying Abraham's hand against Isaac, the other a pilgrim kneeling before the Savior; framed. (*Lanpher*)

Height, 23 and 17½ inches

374. PARIS PORCELAIN AND BRONZE DORÉ CLOCK GARNITURE

Louis XVI Style

✓ 70 Comprising a clock surmounted by doves, upon a medallion of Marie Antoinette, and a pair of covered vases. Painted with amoristic reserves in a turquoise blue ground, in the Sèvres style. [Lot.] (*Lanpher*)

Height of clock, 17 inches; of vases, 11 inches

375. PAIR EMPIRE BRONZE AND BRONZE DORÉ CANDELABRA

French, circa 1810

70 Stems formed as figures of Grecian women supporting on their heads clusters of cornucopia-shaped sconces for four candles; the square plinth *plaque* with symbolical and anthemia.

Height, 24 inches

376. RARE LOUIS XV BRONZE DORÉ MANTEL CLOCK

Dutch, XVIII Century

✓ 70 Arched case surmounted by a square dome with vase finial and ornamented with rococo and classical appliqué; dial with blue enamel spirals and surmounted by tiny figures striking a bell. Movement of later date. Together with a pair of Charles X candlesticks. [Lot.] (*Lanpher*)

Height of clock, 16½ inches

From Ginsburg & Levy, Inc., New York

377. PAIR EMPIRE DECORATED TOLE SQUARE VASES

70 Sides painted with cocks and pheasants in landscapes, on gilded paw feet and square bases. (*Lanpher*)

Height, 12 inches

378. PAIR EMPIRE BLACK AND GOLD TOLE LAMPS

70 Tall lamp in the Egyptian taste, vasiform with swan-head handles; the square plinth base enriched with *bronze doré* mounts. Fitted for two lights, with yellow parchment shade.

Height, 35 inches



[NUMBER 379]

JEAN ANTOINE HOUDON [ATELIER OF]

FRENCH: 1741-1828

[Onyx Statuette]

379. VOLTAIRE SEATED

Full-length robed figure seated in an armchair, the head bent and inclined towards the subject's right; base inscribed: HOUDON. On molded rectangular plinth of the same period. In greenish white onyx.

Total height, 13½ inches

Note: This is one of the small replicas of the well-known marble statue of the seated Voltaire in the Comédie Française in Paris; the size differs from that of the usual replicas found, and the material is believed to be unique. M. Georges Giacometti, in a thirty-page brochure dated Paris, Sept. 27, 1923, which will be given to the purchaser, considers this statuette to be of the period and from the master's own atelier; he states that the signature corresponds to that of Houdon's signed works in marble.

Collection of MM. Ferdinand and Julien Tempelaere, Paris

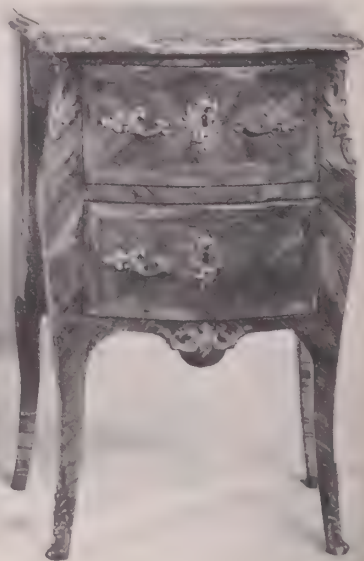
Recorded in G. Giacometti, *La Vie et l'Oeuvre de Houdon*, n.d., Vol. II, p. 271

[See illustration]

380. INLAID MAHOGANY MANTEL CLOCK *French, XIX Century*
Octagonal drum on scrolled support and oblong plinth, inlaid in brass with floral motives and a cavalry stunt; bronze eagle finial. (*Lanpher*)
Height, 22½ inches
381. PAIR SILK AND CHENILLE EMBROIDERY PICTURES *French, circa 1820*
Romantic landscapes, with figures of a man and woman in black, respectively; maple frames. (*Lanpher*)
Heights, 14 and 15½ inches; lengths, 17½ and 19 inches
382. LOUIS XVI INLAID TULIPWOOD SMALL WRITING TABLE
Oblong top lined with dark leather on four tapering square legs, a drawer at one side. (*Witteried*) *Height, 27 inches; length, 31 inches*
383. LOUIS XV CARVED AND CANNÉ FRUITWOOD SIDE CHAIR *French, XVIII Century*
Shaped back and seat filled with cane; the back trieze and gently curved supports embellished with foliage carving and the legs braced with saltire stretcher. (*Witteried*)
384. LOUIS XV FRUITWOOD BEDSIDE TABLE *French, XVIII Century*
Small table with gently curved front, two drawers, tapering supports; *brèche* marble top imperfect. *Height, 28 inches; width, 17 inches*
- 384A. LOUIS XIV CARVED WALNUT AND NEEDLEPOINT ARMCHAIR *French, XVII Century*
Seat and tall canted back covered in antique *gros point* worked with bands of tan blossoms and green leafage in a brown ground; serpentine arms, legs, and stretchers. (*Voss*)
385. LOUIS XV INLAID AMARANTH SMALL DRESSING TABLE *French, XVIII Century*
Shaped top with drawer in front painted with light and dark woods; on tapering curved supports with bronze shoes. Probably reconstructed. (*Witteried*) *Height, 28 inches; length, 29 inches*
386. RÉGENCE CARVED WALNUT AND CANNÉ FAUTEUIL *French, Early XVIII Century*
Caned back and seat, the frame with curved open arms and cabriole legs carved with leafage and shell ornament; with crimson damask seat cushion. (*Eaton*)



[NUMBER 387]



[NUMBER 388]

387. LOUIS XVI CARVED WALNUT AND BLUE SILK BERGÈRE

French, XVIII Century

60

Slightly arched rectangular back, sloped and gently voluted arms, tapering and fluted square front legs with spade feet. The molded frame embellished with dies carved with leaf medallions. Upholstered and covered in fleuretted light blue silk. Loose cushion. (*Witteried*)

[See illustration]

388. LOUIS XV INLAID BOIS DE ROSE PETITE COMMODE

MOUNTED IN BRONZE DORÉ

French, XVIII Century

110-

Small *bombé* commode with two drawers, the front and sides veneered with light and dark wood and paneled with line inlay. The drawers, the tapering curved supports, the voluted returns, and the skirt enriched with *rocaille* gilded handles, escutcheons, and mounts. Top covered with an imperfect slab of *fleur de pêche* marble. Partly obliterated stamp of the *ébéniste* appears on top of left front pilaster. (*Witteried*)

Height, 32½ inches; width, 22 inches

[See illustration]

389. LOUIS XVI TULIPWOOD PARQUETERIE OCCASIONAL TABLE

Small square table, the top inlaid in *parqueterie* design in tulipwood and green tinted wood; one drawer and undershelf; tapering square supports. (Witteried) Height, 28 inches; width, 13 inches

390. LOUIS XVI TULIPWOOD MARQUETERIE WORK TABLE

Small oval table with drawer, rectangular supports, and kidney shaped undershelf; inlaid with a group of musical trophies in tinted woods. (Witteried) Height, 23 inches; width, 19 inches

391. FOUR LOUIS XV CARVED WALNUT SIDE CHAIRS

North Italian, XVIII Century

Open back with scrolled crown and pierced beaker splat; seat in Genoese yellow worsted damask, cabriole legs.

392. BOIS DE VIOLETTE PARQUETERIE OCCASIONAL TABLE Louis XV Style

A small shaped table, the top veneered in *parqueterie* design; sides fitted with small drawers and writing tablet; on shaped supports with undershelf and bronze mounts. (Witteried)

Height, 23 inches; width, 15 inches

393. LOUIS XVI CARVED AND LAQUÉ BERGÈRE IN STRIPED SILK

French, XVIII Century

Arched tall back, rounded arms, tapering fluted supports; the molded frame carved with ribbon twist *guilloché* and acanthus and *laqué* soft white; the back and seat cushion covered in striped silk. (Witteried)

394. LOUIS XVI INLAID TULIPWOOD TABLE DE CHEVET

Small rectangular bedside table with white marble top, three drawers in front, tapering square legs, and undershelf. Veneered with diagonally cut light tulipwood in borders of sycamore and other woods. (Witteried)

Height, 28½ inches; width, 18 inches

395. LOUIS XVI INLAID BOIS DE ROSE COMMODE

MOUNTED IN BRONZE DORÉ

Small two-drawer commode, the front and sides veneered with matched panels of light wood bordered with bandings of green-tinted holly. The chamfered returns similarly inlaid and veneered; four tapering curved supports. Drawers and skirt enriched with gilded bronze ring handles, escutcheons, and appliqués. Top covered with a slab of gray Ste Anne marble. (*Witteried*)

Height, 32½ inches; length, 37 inches

396. LOUIS XV INLAID BOIS DE VIOLETTE WRITING TABLE

MOUNTED IN BRONZE DORÉ

Small shaped oblong table, the top lined with leather and bordered with a gilded bronze *baguette*, supported on gently curved and tapering legs; a drawer at one side. Veneered with kingwood and banded with light wood inlay. (*Witteried*)

Height, 28 inches; width, 24 inches

397. FOUR DIRECTOIRE GREEN AND GOLD PAINTED SIDE CHAIRS

Side chair in the Egyptian taste with slightly flaring back; tapering curved supports, caned seat, and loose cushion. A gilded mascaron centres the splat. (*Witteried*)

397A. DIRECTOIRE MAHOGANY CARD TABLE

Circa 1800

Oblong hinged top lined with green baize, on plain frieze and round tapering legs. (*Voss*)

Height, 29½ inches; length, 33 inches

398. DIRECTOIRE GILDED WALL MIRROR WITH GESSO DECORATION

Upright mirror with gesso *bas reliefs* of classical figures above and below. (*Lanpher*)

Height, 49 inches; width, 21 inches

399. LOUIS XVI BOIS DE ROSE WORK TABLE

French, XVIII Century

Oblong top with beaded edge and a drawer at one side; supported on four tapering curved legs braced with an undershelf. Top and sides veneered with richly figured wood; veneer chipped. (*Witteried*)

Height, 29 inches; width, 20 inches

400. LOUIS XV CARVED WALNUT AND NEEDLEPOINT SIDE CHAIR

French, XVIII Century

Cartouche-shaped molded back, serpentine rails and cabriole legs. Back and seat in antique floral *gros point* with scarlet ground.

401. LOUIS XVI FRUITWOOD LISEUSE

French, XVIII Century

Small oblong table with tray top, open front; the back and ends pierced with quatrefoil openings. A drawer in the lower part; on tapering curved supports. (*Witteried*)

Height, 32 inches; width, 19 inches



[NUMBER 402]

402. LOUIS XVI INLAID TULIPWOOD AND BOIS DE VIOLETTE COMMODE
MOUNTED IN BRONZE DORÉ *French, XVIII Century*

Rectangular body with three drawers in front having slightly projected centre sections. Drawers diagonally veneered with panels of matched tulipwood in borders of tinted holly in a ground of kingwood veneer; chamfered returns inlaid with light woods simulating fluting. Drawers, pilasters, and supports enriched with gilded bronze appliquéés and handles. Top covered by a slab of gray Ste Anne marble. (*Witteried*)

Height, 35 inches; length, 48 inches

[See illustration]

403. LOUIS XVI INLAID TULIPWOOD AND BOIS DE VIOLETTE COMMODE
MOUNTED IN BRONZE DORÉ *French, XVIII Century*

185

Rectangular body with three long drawers projected slightly forward at the centre. The drawers decorated with panels of diagonally cut tulipwood veneer, in borders of green tinted holly and framed in kingwood and acajou, and further enriched with laurel-wreath handles and escutcheons of gilded bronze. Returns inlaid with mock fluting in light woods and extending into short cabriole supports. The valanced skirt embellished at centre with a gilded bronze appliqué. Top covered by a slab of gray Ste Anne marble. (*Witteried*)

Height, 34 inches; length, 50 inches

404. PAIR LOUIS XVI BEECHWOOD AND APRICOT VELOURS FAUTEUILS

120

Jean Baptiste Boulard (M.M. 1754); French, XVIII Century

Molded cartouche-shaped back, armpads, and outcurved seat covered in apricot velours, open voluted arms on fluted supports and round fluted and tapering legs. Stamped under front seat rail: J. B. BOULARD. (*Eaton*)

Note: Jean Baptiste Boulard (1725-1789) was received master in April, 1754, and worked in the rue de Cléry, executing numerous pieces for the royal châteaux, including Louis XVI's famous state bed at Fontainebleau. He was succeeded by his widow. Numerous examples by him are in the Mobilier National. See Salverte, p. 30.

405. LOUIS XVI INLAID KINGWOOD PETITE COMMODE

40

Italian, XVIII Century

Small rectangular chest of three drawers veneered with kingwood and banded with tulipwood on the top, front, and sides; standing on short curved legs; veneer chipped. *Height, 31½ inches; width, 17 inches*

406. PAIR CARVED AND PARCEL-GILDED WALNUT ARMCHAIRS

65

Italian, XVIII Century

Cartouche-shaped back, open scrolled arms on serpentine supports, square canelated and tapering legs. Back and seat in mulberry chintz.

407. LOUIS XVI BOIS DE ROSE CABINET, MOUNTED IN BRONZE DORÉ

French, XVIII Century

130

Rectangular cabinet enclosed by two doors, the interior with shelves. Front and sides diagonally veneered with panels of richly marked light wood with borders of darker wood. The doors and returns ornamented with gilded bronze escutcheons and mounts. Top covered with a slab of gray and white mottled brown marble. Probably reconstructed. (*Witteried*)

Height, 34½ inches; length, 35½ inches

408. LOUIS XVI CARVED AND LAQUÉ BERGÈRE IN STRIPED SILK

Rectangular back, flaring arms, seat, and seat cushion covered in striped pale blue *moiré*. Molded, fluted, and leaf-carved frame and supports; *laqué* blue and gold.

409. LOUIS XVI INLAID TULIPWOOD AND BOIS DE VIOLETTE

WRITING TABLE

French, XVIII Century

Oblong top lined with brown leather and banded with diagonally cut tulipwood veneer; four drawers at one side, the right hand drawer fitted with trays and compartments. Four tapering square legs terminating in bronze shoes. The frieze and supports veneered with panels of tulipwood in a ground of kingwood. (*Witteried*)

Height, 30 inches; length, 51 inches

410. DIRECTOIRE CARVED AND LAQUÉ BERGÈRE IN RUBY VELVET

French, Late XVIII Century

Slightly flaring rectangular back, the gently curved arms terminating in tree pilasters that extend into tapering and fluted round supports; back composed of two fluted columns, the front supports enriched with carved paterae on the dies. Upholstered and covered in antique ruby silk velvet. Loose cushion. (*Witteried*)

411. DIRECTOIRE BRONZE-MOUNTED ACAJOU COMMODE *French, circa 1800*

Rectangular commode of three long drawers with bronze paterae knobs; flanking the drawers, three columns with bronze mounts. The top covered with a slab of white marble.

Height, 38 inches; length, 48½ inches

412. CARVED WALNUT AND OLD GOLD DAMASK BERGÈRE *Régence Style*

Arched and canted square back, wings, and seat cushion covered in golden yellow silk damask; leaf-carved frame, cabriole legs.

413. LOUIS XVI ACAJOU BOUILLLOTTE

French, XVIII Century

Circular top lined with green baize, hinged and folding to a semicircle, supported on five tapering round legs, one of which is affixed to a drawer and pulls out under the hinged leaf. The frieze enriched with gilded brass moldings; the dies with lozenge-shaped plaquettes of the same. (*Witteried*)

Height, 29 inches; diameter, 43 inches

414. RÉGENCE CARVED WALNUT AND NEEDLEPOINT ARMCHAIR

Southern French or Northern Italian, Early XVIII Century

Seat and broad fan-shaped back covered in floral *gras point* of the period, open scrolled arms on serpentine supports, shell-carved front rail and cabriole legs. Rich dark patina.

415. LOUIS XVI INLAID BOIS DE ROSE COMMODE
MOUNTED IN BRONZE DORÉ

Rectangular commode with three long drawers supported on tapering curved legs, the front inlaid with a basket of flowers and a panel of *guilloché* motive in light wood *marqueterie* in a ground of diagonally veneered tulipwood. Top covered with a slab of *brèche d'Aleppo* marble. Gilded bronze handles and mounts. (*Field*)

Height, 33 inches; length, 39 inches

416. CARVED WALNUT AND CRIMSON VELVET STATE CHAIR

Italian, circa 1700

Seat and high square arched back in beautiful Genoese crimson velvet of the period; open scrolled arms and supports, husk-carved cabriole legs with serpentine stretchers.

417. DIRECTOIRE ACAJOU LYRE-BASE WORK TABLE *French, circa 1800*

Oblong tray top on lyre-shaped end supports and splayed legs in richly figured wood; fitted drawer at one side. (*Witteried*)

Height, 28½ inches; width, 20 inches

418. RÉGENCE CARVED WALNUT AND GREEN BROCADE FAUTEUIL

Southern French, Early XVIII Century

Molded cartouche-shaped back with leaf cresting, open voluted arms, shell-carved front rail, stretchered cabriole legs. Seat and back panel in emerald green flowered silk of the period.

419. CARVED WALNUT AND FORGED IRON GUARD-ROOM TABLE

Spanish, XVII Century

Oblong top, on scrolled and voluted lyre-form supports sustaining serpentine iron underbraces.

Height, 32 inches; length, 47 inches

420. LOUIS XV CARVED WALNUT FAUTEUIL *Italian, XVIII Century*

Open cartouche-form back with pierced interlacing ribbon splat; serpentine arms and supports, slip seat in mulberry chintz; square cabriole legs.

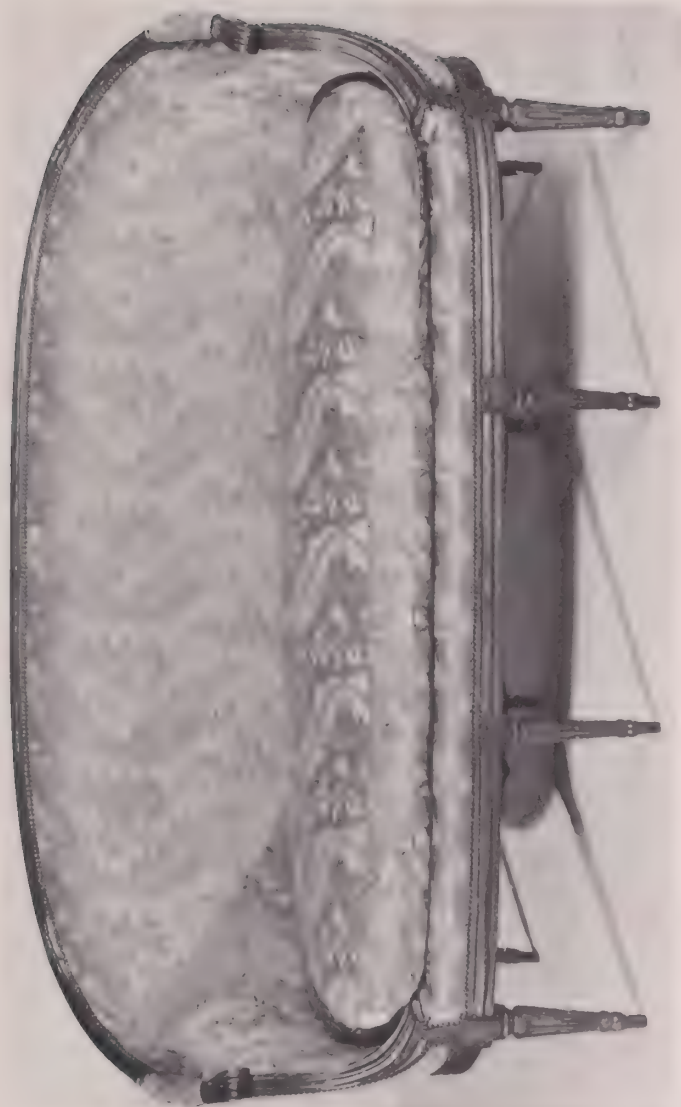
421. LOUIS XVI CARVED BEECHWOOD AND SILK BROCADE CANAPÉ

French, XVIII Century

Beautiful settee of the *confidante* type, the molded crest rail curved downward and inward to form arms terminating in fluted volutes. Supported on eight stop-fluted round tapering legs, the dies carved with medallions of leafage. Upholstered and covered in ivory silk brocade with rococo foliage figure; loose seat in similar fabric. (*Witteried*)

Length, 6 feet 2 inches

[See illustration]



[NUMBER 421]

422. LOUIS XVI CARVED AND CANNÉ FAUTEUIL DE BUREAU

French, XVIII Century

25 Arched and sloping back curving into voluted and grooved arms; fluted tapering round front supports. Back and seat caned. (*Witteried*)

423. LOUIS XVI INLAID TULIPWOOD AND BOIS DE VIOLETTE

PETITE COMMODE

50 Small demilune commode with two drawers in front and supported on four tapering round legs with bronze feet. The front and supports veneered with panels of tulipwood in borders of light and dark woods. Top covered with a slab of *fleur de pêche* marble. (*Witteried*)

Height, 32½ inches; width, 24 inches

424. LOUIS XVI CARVED WALNUT AND IVORY SILK DAMASK LOVE SEAT

French, XVIII Century

140 Rectangular back, arms, and seat cushion re-covered in ivory satin damask in a baroque foliage pattern. Gently curved arms stop-fluted on their front face; fluted tapering round supports with leaf-carved dies. (*Witteried*)

Length, 45 inches

425. PAIR DIRECTOIRE CARVED ACAJOU FAUTEUILS

French, circa 1800

70 Armchair in the antique taste, the slightly flaring rectangular back and seat covered in figured rose fabric. The arms terminating in carved lion masks and the tapering square front supports in paw feet.

426. LOUIS XVI CARVED WALNUT AND SILK BROCADE MARQUISE

French, XVIII Century

125 Gently arched back sloping into molded and voluted arms; tapering fluted round supports with leaf-carved dies. Back and loose seat cushion covered in flowered ivory satin brocade. (*Witteried*)

Width, 36 inches

427. DIRECTOIRE FRUITWOOD LIT DE REPOS

French, circa 1800

40 A daybed in the antique style with paneled flaring rectangular ends and grooved tapering square supports. Loose cushion and pillow covered in figured yellow sateen.

Length, 56 inches; width, 22 inches

428. CHARLES X DECORATED PAPER THREE-FOLD SCREEN

French, Early XIX Century

60 Representing a view in Provence with figures on a river bank outside a stone cottage; border simulating figured marble.

Height, 5 feet 10 inches; width, 5 feet

429. **APPLIQUÉ-EMBROIDERED ARMORIAL HANGING** *Italian, XVII Century*
 Appliqué in many-colored silks with two rococo escutcheons surmounted by a coronet, within a border of interlacing foliage and lilies, on a ground of dark green linen. *Height, 9 feet 6 inches; width, 7 feet 5 inches*
430. **VENETIAN LOUIS XVI DECORATED LAC DEMI-LUNE COMMODE**
 Half round commode, the front banded with *putti* and a pair of lovers in shaped cartouches on a pale green ground with white borders. Top painted to simulate Siena marble. A door encloses the front. (*Witteried*)
Height, 36½ inches; length, 53½ inches
431. **LOUIS XVI BRASS GALLERIED ACAJOU BOUILLOTTE**
 Circular top consists of a slab of dark grained white marble guarded by a fretted brass gallery. The frieze is paneled with metal moldings; contains two drawers and two candle slides. Tapering fluted supports terminate in bronze shoes. (*Witteried*) *Height, 28 inches; diameter, 26 inches*
432. **LOUIS XVI BRASS GALLERIED ACAJOU BOUILLOTTE**
 Top consists of a slab of gray Ste Anne marble guarded by a fretted brass gallery; frieze paneled with metal moldings. Contains two small drawers and two candle slides; the fluted round supports terminate in bronze feet. (*Witteried*) *Height, 27 inches; diameter, 26 inches*
433. **LOUIS XV BOIS DE ROSE MARQUETERIE COMMODE MOUNTED IN BRONZE DORÉ**
André-Antoine Lardin (M.E. 1750); French, XVIII Century
Bombé body with three drawers, arranged two above one, the drawers and end panels richly inlaid with shaped panels of floral *marqueterie* inlaid in light woods in a ground of tulipwood surrounded by diagonally cut light and dark wood veneer. The drawers and the gracefully voluted returns and tapering supports enriched with gilded bronze *rocaille* handles, escutcheons, corner mounts, and shoes. Top covered by a slab of *fleur de pêche* marble. Stamped LARDIN on top of left front pilaster. (*Witteried*) *Height, 32 inches; length, 39 inches*
434. **PAIR OF MAHOGANY PARQUETRY SHAPED COMMODOES IN THE LOUIS XV TASTE**
 Shaped front with two doors enclosing shelves and drawers, handsomely inlaid in a parquetry design in light wood; carved returns and short scroll legs. Top covered with a slab of Portor marble.
Height, 40 inches; length, 46 inches

435. LOUIS XVI BRASS GALLERIED ACAJOU BOUILLLOTTE

French, XVIII Century

120

Circular table, the top consisting of a slab of black-veined white marble and bordered with a fretted brass gallery. Two small drawers and two candle slides around the frieze; four tapering round supports with bronze shoes. (*Witteried*) *Height, 27 inches; diameter, 25½ inches*

436. SET OF TEN LOUIS XVI CARVED BEECHWOOD
AND STRIPED SILK SALON CHAIRS

200

Four armchairs and six side chairs with molded oval medallion backs, shield shaped seats, fluted tapering round supports; the backs and seats in striped silk, the molded frames of light walnut. (*Witteried*)

437. LOUIS XVI INLAID AMARANTH AND TULIPWOOD COMMODO
MOUNTED IN BRONZE DORÉ

French, XVIII Century

250

Three-drawer commode supported on four tapering square legs, the front and ends geometrically paneled with inlaid bandings of cross-cut tulipwood veneer in borders of light and dark wood. Drawers, returns, and supports enriched with gilded bronze beaded ring handles, beribboned escutcheons appliqués and shoes. Top covered by a slab of gray Ste Anne marble. (*Witteried*) *Height, 35½ inches; length, 43½ inches*

438. PAIR LOUIS XVI WHITE LAQUÉ AND SILK VELOURS BERGÈRES

French, XVIII Century

220

In the manner of Georges Jacob. Arched tall back, rounded arms and seat, and tapering round front supports; the molded frame embellished with carved paterae on the dies and *laqué* white. Covered in worn Nattier blue silk velours. (*Witteried*)

[See illustration]

439. LOUIS XIV THREE-FOLD SCREEN IN BRUSSELS SEVENTEENTH CENTURY
SILK-WOVEN TAPESTRY

180

Three tall panels of Brussels tapestry woven with clusters of baroque fruits and foliage in greens, tans, and reds; borders filled with mascarons and Renaissance leaf arabesques in quieter tones. Parcel-gilded walnut frame carved on the crest and base with satyr masks. (*Witteried*)

Height, 7 feet 8 inches; width, 6 feet 6 inches

[See illustration]



[NUMBERS 438 AND 439]

440. LOUIS XV FRUITWOOD CABINET *French, XVIII Century*
 Standing cabinet fitted with shelves and enclosed by two wire grilled doors, a drawer above. Molded chamfered returns, extending into short cabriole supports. Top covered with a slab of white marble.

Height, 56 inches; width, 39 inches

441. LOUIS XIV CARVED WALNUT AND NEEDLEPOINT STATE CHAIR *French, XVII Century*

Seat and square back in floral *gros point* of the period, worked in many colors; open acanthus-scrolled arms finely carved with a cluster of roses; S-scrolled legs and stretchers.

442. LOUIS XVI CARVED AND LAQUÉ CANAPÉ IN SILK VELOURS *French, XVIII Century*

Gently arched and molded crest rail curving downward and inward to form the fluted and gondoled arms. Seat frame serpentine in front and supported on four tapering fluted round legs; three similar legs at the rear. Upholstered and covered in rose silk cut velvet. Frame *laqué* soft white. (*Witteried*)

Length, 6 feet 6 inches

443. LOUIS XVI INLAID TULIPWOOD AND BOIS DE VIOLETTE WRITING TABLE *French, XVIII Century*

Oblong top lined with leather and banded with cross-cut tulipwood; two drawers in front veneered with tulipwood in herringbone design. On four kingwood tapering square legs with bronze shoes. (*Witteried*)

Height, 28½ inches; length, 37 inches

444. LOUIS XVI CARVED AND LAQUÉ LIT DE REPOS IN SILK VELOURS

Daybed of rectangular form, the rising and slightly flaring ends pierced with grillwork; on short tapering legs. Carved frame *laqué* green and gold; loose mattress and bolster pillows covered in old rose silk velours.

Length, 6 feet 6 inches; width, 37 inches

445. DIRECTOIRE CARVED AND LAQUÉ BERGÈRE IN BLUE SILK

French, Late XVIII Century

Slightly flaring rectangular back composed of two fluted columns with rosetted capitals and carved finials, and a molded frieze rail. Gently curved arms faced with spiraled pilasters; tapering fluted round front supports. Upholstered and covered in light blue silk; loose cushion. (*Witteried*)

446. MARQUETERIE SEMICIRCULAR CONSOLE, MOUNTED IN BRONZE DORÉ

Louis XVI Style

With frieze drawer above two deep drawers flanked by convex cupboards; inlaid in light and dark woods with a floral lozenge lattice, the frieze with a rosetted guilloché; tapering square legs. *Flour de pêche* marble top.

Height, 35 inches; width, 31¼ inches

447. CARVED AND POLYCHROMED WALNUT LIBRARY TABLE

Florentine Renaissance Style

Vasiform end supports with carved and polychromed festooned escutcheons flanked by winged caryatids.

Height, 29 inches; length, 6 feet

448. TYROLEAN CARVED PINE AND MAPLE MONEYCHANGER'S TABLE

Oblong sliding top, on paneled frieze and vasiform supports braced by double traverses.

Height, 28 inches; length, 44 inches

449. ACAJOU AND TULIPWOOD PARQUETERIE OCCASIONAL TABLE

Louis XVI Style

Oval top of *brèche d'Alpe* marble with bronze gallery, and one drawer, the frieze and kidney-form undershelf veneered with a lozenge *parqueterie*.

Height, 30 inches; width, 21¾ inches

450. BOIS DE ROSE MARQUETERIE TEA TABLE, MOUNTED IN BRONZE DORÉ

Louis XV Style

Shaped top, with bronze rim and handles, inlaid with a cluster of flower sprays in light and dark wood *marqueterie*. On bronze-mounted curved supports. (*Witteried*)

Height, 24 inches; length, 36 inches

451. DIRECTOIRE KINGWOOD AND TULIPWOOD OCCASIONAL TABLE

French, Late XVIII Century

Oblong tray top veneered with richly marked light wood in a geometrical design, supported on slender turned spindle legs with stretchers. (*Witteried*)

Height, 28½ inches; width, 22 inches

452. BRONZE DORÉ AND FRENCH PORCELAIN CLOCK GARNITURE

Régence Style

Comprising a quadrangular clock *plaque* with Sèvres type porcelain; and a pair of two-handled vases in yellow porcelain reserved with rococo landscape vignettes and amorous groups. One cover repaired; assembled lot. [Lot.]

Heights, 15¼ and 16 inches

- 750 453. THREE RELIGIOUS PAINTINGS ON GLASS *Italian, XVIII Century*
 Depicting the Annunciation, the Adoration of the Infant Christ, and the Visitation. [Lot.] (*Lanpher*)
454. ALTAR GARNITURE OF FIVE CARVED AND GILDED STATUETTES *Italian, XVIII Century*
 Comprising a crucifix, a pair of angelic figures as pricket candlesticks, and two smaller figures of saints. [Lot.] (*Lanpher*)
Heights, 10 to 24 inches
- 12 455. RUSSIAN IKON AND TWO MIRRORS
 Ikon depicting the Virgin addressing a hierarchy of saints; Italian mirror painted with figure of S. Joseph; and a parcel-gilded mirror. [Lot.] (*Lanpher*)
- 35 456. SIX SMALL PAINTINGS ON GLASS *XVIII Century*
 Depicting the Blessing of Isaac; S. Elizabeth; Cortez in prayer; a saintly monk; a bowl of fruit; and a romantic pastoral of later date. [Lot.] (*Lanpher*)
- 15 457. PAINTED LAC WORK BOX *Venetian Rococo*
 Oblong casket painted with figures and flowers in a blue and ivory ground. *Length, 14½ inches*

[END OF SALE]

15000 7870 50
 21 18323
 Total 2629750

APPRAISALS

For United States and State Tax Insurance and Other Purposes

The American Art Association-Anderson Galleries, Inc., will furnish appraisals, made by experts under its direct supervision, of art and literary property, jewelry, and all personal effects, in the settlement of estates or for inheritance tax, insurance, or other purposes.

Upon request the Company will furnish the names of many trust and insurance companies, executors, administrators, trustees, attorneys and private individuals for whom the Company has made appraisals which not only have been entirely satisfactory to them, but which have been accepted by the United States Estate Tax Bureau, the State Tax Commission, and others in interest.

The Company is prepared to supplement its appraisal work by making catalogues of private libraries, of the contents of homes, or of entire estates, such catalogues to be modeled after the carefully-produced sales catalogues of the Company.

AMERICAN ART ASSOCIATION
ANDERSON GALLERIES · INC

30 EAST 57TH STREET · NEW YORK

Composition and Presswork

by



PUBLISHERS PRINTING COMPANY

William Bradford Press

NEW YORK



THE METROPOLITAN
MUSEUM OF ART

Thomas J. Watson Library

